

WARNING: For use only with the following models of RadioLINK Base / Alarm:

- Ei168RC** Base fitted with **Ei161RC** Smoke Alarm
- Ei168RC** Base fitted with **Ei164RC** Heat Alarm
- Ei168RC** Base fitted with **Ei166RC** Smoke Alarm
- Ei405** RadioLINK Smoke Alarm
- Ei405TY** RadioLINK Smoke Alarm

Do not use any other models of RadioLINK Base / Alarm



P/N B15065 Rev 2



**SMOKE ALARM
REMOTE CONTROL**

for use with Ei168RC, Ei405 & Ei405TY only

Instruction Leaflet

Contains vital information on the products operation and installation. Read and retain carefully. If you are just installing this product **the leaflet MUST be given to the householder.**



Model: Ei410

1. INTRODUCTION

The Ei410 Remote Control is an excellent accessory to help you manage and maintain your Smoke/Heat Alarms. It is designed for use with the **RadioLINK** range of Bases and Smoke/Heat Alarms listed above.

The Ei410 Remote Control allows you, from a distance, to:

Locate the unit causing the other alarms to sound - this is of great benefit when all the alarms are sounding, particularly at night. The Locate function will rapidly identify where the fire is located, as it stops all the alarms except ones sensing fire. This is ideal for larger systems as people nearest the fire can be quickly evacuated and/or the fire controlled if it is small.

Hush the nuisance alarms without having to reach up to the Smoke / Heat Alarms on the ceilings.

Test the alarms without having to reach up to the Smoke/Heat Alarms on the ceilings.

Memory locate the unit that had been the source of a previous alarm. This is very useful when troubleshooting systems of many alarms.

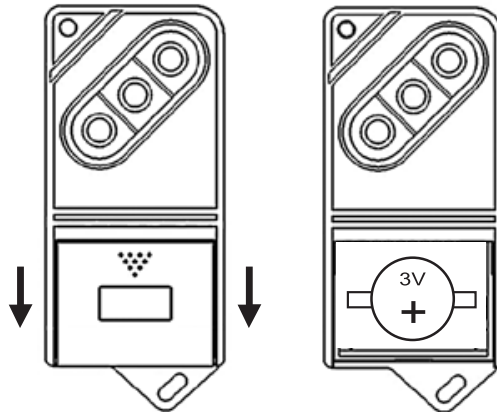


Figure 1

2. INSTALLATION

1. For ease of installation, the Remote Control is supplied with the battery connected and ready to use.

2. Press the **Test** button on the Remote Control until the red light comes on. The red light indicates a radio frequency (RF) signal is being sent (if this does not work, remove the battery (see Figure 1), hold down the **Test** button for 10 seconds and then re-install the battery). The Smoke/Heat Alarms should respond within 20 seconds once they are within range (typically the range is over 10 metres indoors but this will depend on the type of walls etc.).

3. As with all **RadioLINK** products, it is essential that you **House Code your Remote Control with your Bases and Smoke/Heat Alarms** to prevent false alarms and other interference with nearby systems (see overleaf).

It is important that the Remote Control is readily accessible so it can be quickly used. We recommend that it is hung on the wall near one of the Smoke/Heat Alarms. This will help ensure that it is not lost and will encourage weekly testing of the alarms.

3. HOUSE CODING THE Ei410 REMOTE CONTROL

Some of the **RadioLINK** products can transmit and receive over 150 metres (in free space) so it is important to ensure neighbouring systems do not interfere with your system and vice versa.

3.1 House Coding Procedure

To House Code your Remote Control:

The following procedure will House Code your Remote Control with your **RadioLINK** Bases / Alarms. After the House Coding procedure, the **RadioLINK** Bases / Alarms and the Remote Control will only communicate with other units House Coded at the same time.

1. Place all the **RadioLINK** Bases and/or Smoke Alarms into House Code mode, within 10 minutes, as described in their instruction leaflets.
2. Also, within the same 10 minutes, place the Ei410 Remote Control into House Code mode by pressing and holding the Test and Locate buttons simultaneously until the red light turns on. Release the buttons and the red light will now flash continuously (for 15 minutes) to show it is in House Code mode.
3. The Remote Control will now send a radio message every 5 seconds to indicate it is in House Code mode. All Alarms within range, that are also in House Code mode themselves, will memorise the House Code of the Remote Control.

Note: It may be necessary to move around the property with the Remote Control to ensure that all Alarms/Bases have received the signal.

4. Check that the number of amber light flashes (for **RadioLINK** Bases) or blue light flashes (for **RadioLINK** Smoke Alarms) corresponds with the number of units in the system (i.e. Bases / Alarms plus Remote Control). For example, with 3 **RadioLINK** Bases / Alarms and 1 Remote Control you should see 4 light flashes from each base/alarm.
5. Remove all the **RadioLINK** Bases and Alarms from House Code mode as described in their instruction leaflets.
6. Remove the Remote Control from House Code mode by pressing and holding the Test and Locate buttons simultaneously until the red light comes on constantly (i.e. the same method as used to enter House Code mode). Release the buttons and the red light will no longer flash, indicating that the Remote Control has exited House Code mode.

(Alternatively, the Remote Control will exit the House Code mode by itself after 15 minutes without further user intervention. However, this could result in problems with

nearby systems if their units are being House Coded at the same time).

7. Finally, test each Base / Alarm with the Remote Control and verify that the Remote Control activates it.

If some or all of the Bases / Alarms are not activated by the Remote Control repeat the House Code procedure again.

3.2 Clearing the House Codes

It may be necessary at some stage to clear the House Codes (e.g. if you wanted to use the Remote Control with different un-coded alarms).

To clear the House Codes:

Hold all three buttons down together, until the red light flashes and then release. This may take up to 10 seconds.

Note: clearing the House Codes will now reset the Remote Control to the original factory setting. It will now only communicate with un-coded alarms (see Base / Alarm instruction leaflet for information on how to un-code the Bases / Alarms).

4. USING THE Ei410 REMOTE CONTROL

We recommend that you manually test your alarms weekly using your Ei410 Remote Control.

Manual Testing

Press the **Test** button on the Remote Control. The red light will come on to indicate it is transmitting an RF signal. Then:

- the units will alarm within 20 seconds, with the red light on the Alarm flashing rapidly (this indicates that the chamber has been tested in exactly the same way as if the test button of the alarm itself had been pressed. The Alarms will also now be in Hush mode for the next 10 minutes).

Using the Locate & Hush Buttons in the event of alarm

When the units are in alarm, **first** press the **Locate** button on the Remote Control (within range of each unit). This will stop all the Alarms except those sensing fire.

This is a very useful feature. For example, consider twelve Alarms sounding simultaneously, then the unit sensing the fire can be quickly identified and the problem resolved.

Pressing the **Hush** Button on the Remote Control (within range of each unit) will silence the alarms for approximately 10 minutes:

Only units sensing smoke/heat i.e. with their red light flashing rapidly will have their sensitivity reduced. However, all units will be silenced (as the unit which is sensing smoke/heat will send an alarm cancel signal to all the other Alarms).

5. ALARM MEMORY FUNCTION

Using the **Locate** button on the Remote Control it is possible to identify which Alarms have previously sensed fire (i.e. been in alarm). This is of great benefit in systems with 3 or more units when trying to identify the source of previous alarms.

To use the Alarm memory function:

1. After initial installation, reset the memory by pressing the **Test** button on the Remote Control until all the units have alarmed.
2. Any unit now sensing fire will alarm and the memory function will memorise this event.
3. Press the **Locate** button on the Remote Control to identify which units have previously alarmed. The units, which have previously sensed fire, will sound briefly.
4. Once identified you should check that the units are in correct working order (per relevant user instructions). Remember to reset the memory as before by pressing the **Test** button on the Remote Control (this must be done when any of the **RadioLINK** units have been in alarm and/or have been button tested).

6. BATTERY REPLACEMENT

The battery will normally last for 10 years. If it fails to communicate with the Alarms and/or the red light looks dim or does not light when a button is pressed, the battery is depleted and must be replaced.

Slide cover back (as shown in *Figure 1*) and remove the battery. Press the **Test** button for 10 seconds and then replace with a new Lithium 3 Volt Cell type DL2032 or CR2032. Ensure battery orientation is correct as shown in *Figure 1*.

7. GETTING YOUR REMOTE CONTROL SERVICED

If your Remote Control fails to work after you have read this leaflet contact Customer Assistance at the nearest address given at the end of this leaflet. If it needs to be returned for repair or replacement put it in a padded box with the battery disconnected. Send it to "Customer Assistance and Information" at the nearest address given on Remote Control or in this leaflet. State the nature of the fault, where the Remote Control was purchased and the date of purchase.

Note: It may be necessary, sometimes, to return a Smoke/Heat Alarm (see Smoke/Heat Alarm instruction leaflet) along with the Remote Control, if you cannot establish which may be faulty.

8. FIVE YEAR GUARANTEE (Limited)

Ei Electronics guarantees this product (excluding the battery) against any defects that are due to faulty material or workmanship for a five year period after the original date of purchase. This guarantee only applies to normal conditions of use and service, and does not include damage resulting from accident, neglect, misuse unauthorized dismantling or contamination howsoever caused. If this product has become defective it must be returned to one of the addresses below (see "Getting Your Remote Control Serviced") with proof of purchase. If the product has become defective during the five year guarantee period the unit will be repaired or replaced without charge. This guarantee excludes incidental and consequential damages.

Do not interfere with the product or attempt to tamper with it. This will invalidate the guarantee.

The crossed out wheellie bin symbol that is on your product indicates that this product should not be disposed of via the normal household waste stream. Proper disposal will prevent possible harm to the environment or to human health. When disposing of this product please separate it from other waste streams to ensure that it can be recycled in an environmentally sound manner. For more details on collection and proper disposal, please contact your local government office or the retailer where you purchased this product.



Aico Ltd

Mile End Business Park,
Maesbury Road, Oswestry,
Shropshire SY10 8NN, U.K.
Telephone: 0870 758 4000

www.aico.co.uk

Ei Electronics

Shannon Industrial Estate,
Shannon, Co. Clare, Ireland.
Telephone: +353 (0)61 471277

www.eielectronics.com