

Code Handle® 8812 EU DIN Std

01/2019

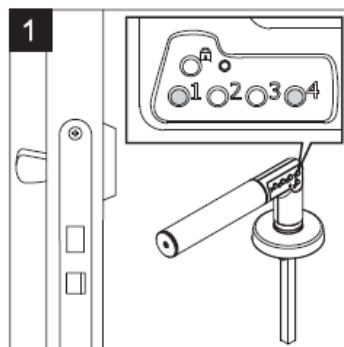
Experience a safer
and more open world

Fitting instructions Code Handle 8812 EU DIN Standard



1. Before fitting the handle to the door, it has to be set-up with an administration code.

The handle has no administration code when first opened.

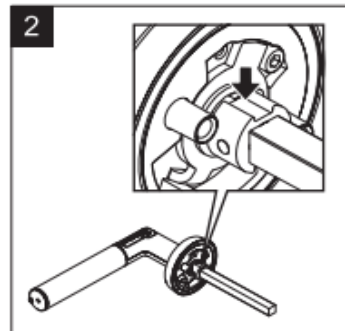


1. Keep the handle horizontal with the spindle pointing down.
 2. Press button 1 and 4 at the same time. The led will flash red.
 3. Stop pressing the buttons. The green light will stay on constantly.
 4. Enter a 6 digit administration code. The light will flash green rapidly. The administration code is now valid.
- To change the administration code, repeat the notes above.
N.B. that all user codes will disappear when you change administration code

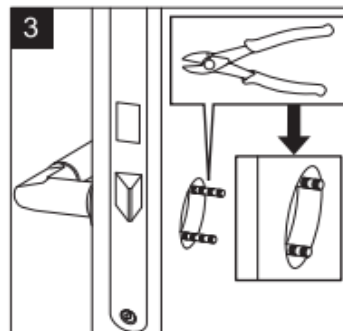
Code Handle® 8812 EU DIN Std

01/2019

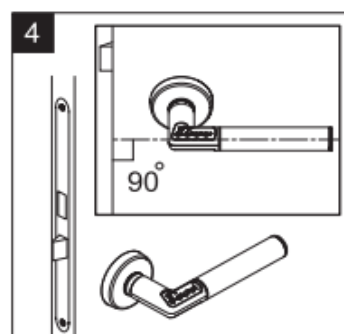
Experience a safer
and more open world



2. Turn the spindle so the track points upwards, as shown on picture 2. Keep this position when fitting, according to picture 4.



3. Place the inner handle on the door and fit the enclosed screws through the door blade. Cut the screws in the nearest waist on the screw, max 6 mm outside the door-blade. A 22 mm (minimum) hole through the door is needed to accommodate for the cam around the spindle.

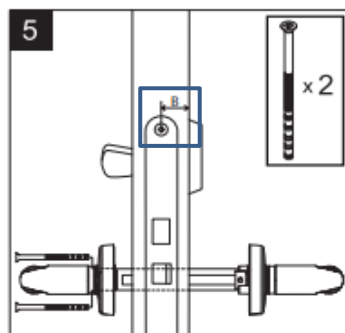


4. Fit the outside handle (with keypad) on the door. Make sure to keep the handle horizontal during when fixing.

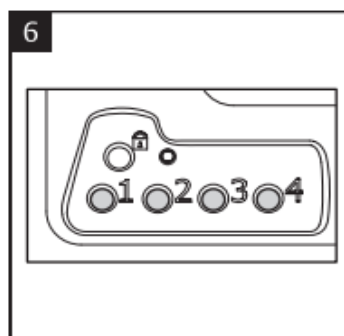
Code Handle® 8812 EU DIN Std

01/2019

Experience a safer
and more open world



5. Connect the inner and outer handle with the screws. Be sure to fit the handle correctly, so that both handles rotate back without any problems. The handle fits door thicknesses of 35-80 mm with a B-measurement (see image 5) of at least 21 mm. For smaller B-measurement down to 14 mm, use distance ring accessory 8820.



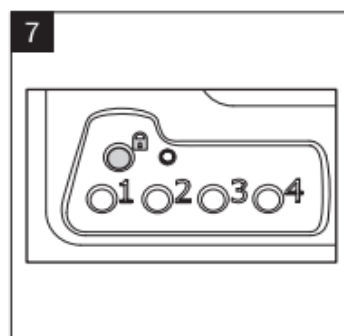
- 6.
- Add at least one user code to the product, by following instructions below:
1. Press the padlock key until a red, steady light appears.
 2. Enter the administration code within 5 sec. The light turns green.
 3. To store the code in one of the 9 memory positions use key number 1 and press the number of times corresponding to selected memory position; one press for memory position 1 and two presses for memory position 2 etc.
 4. Wait until a green, steady light appears.
 5. Enter the new user code, consisting of 4, 5 or 6 digits.
 6. Press the padlock key to confirm or wait until the green light is turned off.
 7. More user codes can be stored on the remaining memory positions, by following the instructions above and storing, according to point 3.

Code Handle® 8812 EU DIN Std

01/2019

Experience a safer
and more open world

If the wrong code is used the light will alter between red and green. (The handle will remain open when the correct code is used provided that auto locking mode has not been selected, see below for further information).



7. Lock the handle by pressing the padlock key

If you would like to watch a video to see how to set up & operate Code Handle, click the link below:

<http://youtu.be/e5a4OVOQ4nE>