

## 1. PRODUCT DESCRIPTION

The Firehawk **Hearing Impaired System** (FH700HIA) comes with a **Control Unit** with a built in high intensity **Flashing Strobe**, a plug-in power supply/charger and a **Vibrating Pillow Pad**. It is wirelessly (radio) linked to Firehawk **Smoke Alarms** (FHB10W), **Heat Alarms** (FHH10W) and **Carbon Monoxide Alarms** (CO7B-10Y W).

**PLEASE NOTE:** Firehawk wireless (radio) smoke, heat and co alarms are not included in the hearing impaired system and must be purchased separately.

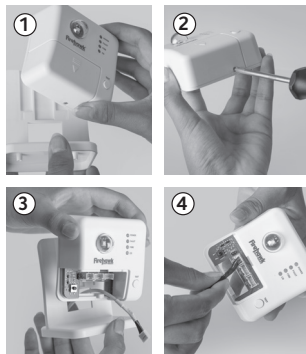
## 2. FEATURES

- Wirelessly (radio) linked to (one other) additional **Hearing Impaired Control Unit, Smoke Alarms, Heat Alarms or CO Alarms** for early warning of a developing fire or carbon monoxide hazard via the vibrating pad and flashing strobe.
- Super safe radio technology to enable fast and easy pairing and installation.
- Supports up to 14 Firehawk wireless (radio) interlinked alarms devices.
- Rechargeable backup battery with up to 72 hours of operation on a full charge.
- High intensity **Flashing Strobe**.
- Supports two **Vibrating Pillow Pads** with 3 metres of cable.
- Test function to check all hardware and wireless (radio) connections within a system at once.
- Low battery warning.
- Suitable for use in leisure accommodation vehicle.

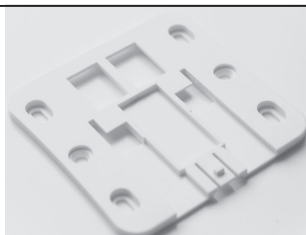
## 3. ALARM ASSEMBLY

Prepare the Hearing Impaired System as follows:

- 1 Remove the **Control Unit** stand (if fitted) by sliding the **Control Unit** upwards from the stand.
- 2 Remove the screw of the access panel and the Panel itself.
- 3 Pass the Power Supply and **Vibrating Pillow Pad** wires through the back of the stand and **Control Unit**.
- 4 Connect the wires from **Vibrating Pillow Pad 1** (and **Vibrating Pillow Pad 2** if two are being used) to the sockets (**Vibrating Pillow Pad 1** and **Vibrating Pillow Pad 2**) and the power wire to the 5 Vdc socket.



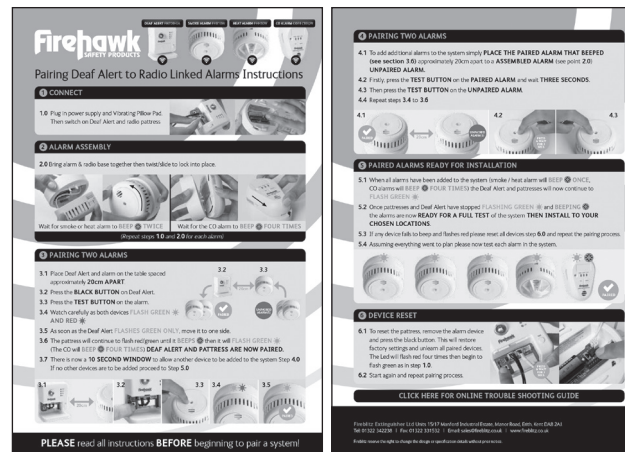
**NOTE:** If you prefer to mount the **Control Unit** on the wall, use the mounting plate (shown below) and attach it to your chosen position on the wall with suitable fixing screws. Slide the **Control Unit** down onto the plate to locate it. Remove the cut-out in the bottom of the access panel.



## 4. WIRELESS (RADIO) PAIRING

### Pairing the Wireless (radio) Hearing Impaired System

The Firehawk **Hearing Impaired System** (FH700HIA) can be wirelessly (radio) interconnected by to one other **Control unit** (FH700HIA). Firehawk **Smoke Alarms** (FHB10W), **Heat Alarms** (FHH10W) and **Carbon Monoxide Alarms** (CO7B-10Y W) are supplied separately. Up to 14 alarms may be paired to the system. Please refer to the enclosed instructions for pairing wirelessly (radio) linked alarms to the Firehawk **Hearing Impaired System** (FH700HIA).



**IMPORTANT:** For comprehensive pairing instructions, please read enclosed pairing leaflet (shown above), scan this QR code on your phone or visit: [www.fireblitz.co.uk/support/](http://www.fireblitz.co.uk/support/)



### HOW TO ADD AN ADDITIONAL CONTROL UNIT

**NOTE:** For instructions on how to add an additional **Control Unit** (FH700HIA) to your system please either scan this QR code on your phone or visit [www.fireblitz.co.uk/control-unit-pairing/](http://www.fireblitz.co.uk/control-unit-pairing/)



### PAIRING TEST

**IMPORTANT:** Before installing the paired alarms and **Hearing Impaired System** (FH700HIA) around your home it is important to ensure the pairing process was successful.

To test the system, press the test button on the **Control Unit** (FH700HIA), this will test its hardware and transmit a wireless (radio) test signal to all linked devices. Each linked device must sound within 20 seconds! Next press the test button on a paired alarm device, the **Control Unit** (FH700HIA) will respond by performing a hardware test and all other alarms will sound. If any device does not sound or the **Control Unit** (FH700HIA) does not perform a hardware test when a paired device is tested the system has failed to pair and the pairing process needs to be repeated.

## 5. INSTALLATION

- 1 Place the **Control Unit** where the strobe can be seen and place the **Vibrating Pillow Pad** in the most suitable position (see section: **Using the Hearing Impaired System** below).
- 2 Once all of the alarms have been paired and tested (above), install the alarms to your chosen locations using the section **Choice and Location of Alarms** in their respective manuals, or see sections 8-10.
- 3 With alarms in position you must test the entire wireless (radio) system again from each device (see section 4). Every interconnected device must sound after pressing the test button on the **Control Unit** (FH700HIA) and it must react to a test from each connected alarm device. If a device fails to sound it may be installed out of radio range or something is interfering with its signal. Please see radio trouble shooting guide at [www.fireblitz.co.uk/product/hearing-impaired-system/](http://www.fireblitz.co.uk/product/hearing-impaired-system/)

## 6. USING THE HEARING IMPAIRED SYSTEM

### GENERAL GUIDANCE

The entire **Hearing Impaired System** and it's paired alarms should be tested at least once per week. The location and type of equipment should be carefully chosen to ensure it is suitable for the individual or family being protected. Full guidance on this can be found in BS 5839-6 section 14.

### VIBRATING PILLOW PAD

The **Vibrating Pillow Pad** is for use under the pillow or mattress, laid flat and as close to the individual as possible. Please test the unit in position to ensure it can be felt through pillow.

**WARNING: DO NOT** place the **Vibrating Pillow Pad** within 15cm of any heart pacemaker.

### STROBE LIGHTS AND EPILEPSY

Strobe lights can, in certain circumstances, trigger an epileptic seizure. However, this **Hearing Impaired System** (FH700HIA) has been designed and built to meet the requirements of BS5446- 3:2015 which requires that the frequency of the flashing strobe should not be more than 2 hertz. The Epilepsy Foundation say "Generally, flashing lights most likely to trigger seizures, are between the frequency of 5 to 30 flashes per second (Hertz)"

For further guidance see their link at: [www.epilepsy.com/learn/triggersseizures/photosensitivity-and-seizures](http://www.epilepsy.com/learn/triggersseizures/photosensitivity-and-seizures)

### LED INDICATORS

**Green Power LED** This will flash once a minute to indicate that the power is connected.

**Yellow Fault LED** will flash once every minute if there is a fault in wireless (radio) transmission, **Vibrating Pillow Pad** connection, or a low battery. For trouble shooting tips please either scan this QR code on your phone or visit: [www.fireblitz.co.uk/hearing-impaired-system/](http://www.fireblitz.co.uk/hearing-impaired-system/)

**Red Fire Alarm LED** will flash during a FIRE and when tested from a Smoke or Heat alarm.

**Red CO Alarm LED** will flash if Carbon Monoxide has been detected and when tested from the Carbon Monoxide Alarm.

## 7. TESTING THE SYSTEM - WEEKLY

Press the test button on the **Control Unit** (FH700HIA). The four LED's should flash one after another followed by flashes from the strobe, the attached **Vibrating Pillow Pads** should vibrate, and the unit will transmit a test signal to all wirelessly (radio) interconnected devices. All interlinked devices should sound within 10 seconds, if any fail to sound please either scan this QR code on your phone or visit: [www.fireblitz.co.uk/hearing-impaired-system/](http://www.fireblitz.co.uk/hearing-impaired-system/) and read the trouble shooting guide.



Firehawk SAFETY PRODUCTS

Rechargeable Lithium Cell BACK-UP



WIRELESS (RADIO)

Hearing Impaired System

CONTROL UNIT WITH STROBE AND VIBRATING PILLOW PAD SYSTEM

MANUAL

CONTROL UNIT

VIBRATING PILLOW PAD



PRODUCT INFORMATION



FH700HIA

READ AND RETAIN THIS USER MANUAL

## WIRELESS (RADIO) SYSTEM

The **Hearing Impaired System** (FH700HIA) and connected wireless (radio) Firehawk alarms interconnect using an 868Mhz radio. All devices in the system have an open-air range of 100 metres however this is affected by temperature, humidity, and obstacles in the rf signals path such as walls and furniture. A general guide is 30 meters of range when installed but varies with building construction. To guarantee system reliability it is recommended that the system be regularly tested from each alarm within a system and each alarm must react to every device when under test. The Fireblitz wireless (radio) system is not a mesh system and does not relay a signal from one device to another therefore care must be taken to ensure each alarm is within radio range of every other device within the system.

## 8. CHOICE AND LOCATION OF ALARMS

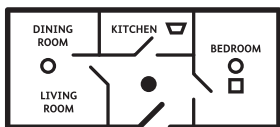
**Photoelectric Smoke Alarms** are best for sensing smouldering fires and therefore best suited for rooms containing furniture, bedding and clothes such as escape routes, lounges, bedrooms and other living rooms. They are recommended by BS 5839 pt6 for living accommodation where most fires originate in electrical equipment and smouldering material such as furniture, clothing, curtains and carpets.

**NOTE:** Heat Alarms are most suitable for kitchens, boiler rooms, workshops and garages where dust, dirt and moisture would contribute to nuisance alarms. Heat alarms should not be used on walls or in escape routes and should always be interlinked to smoke alarms. Do not install heat alarms in sleeping areas; for example, bedrooms, nurseries, playrooms or areas where the elderly and disabled may spend long periods of time.

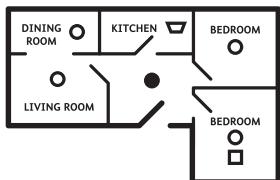
For minimum protection, install at least one smoke alarm on each level of your home. They should be installed in hallways, corridors and all escape routes from the building and within 3 meters of all bedroom doors. All alarms should be interconnected.

Recommended siting of smoke and heat alarms in:

### SINGLE STOREY HOME WITH ONE SLEEPING AREA

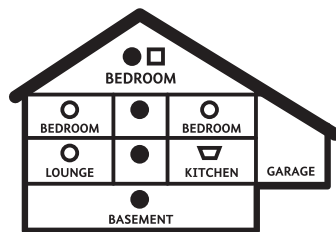


### SINGLE STOREY HOME WITH TWO SLEEPING AREAS



MULTIPLE STOREY HOME WITH MULTIPLE SLEEPING AREAS.

### MULTIPLE STOREY HOME WITH MULTIPLE SLEEPING AREAS

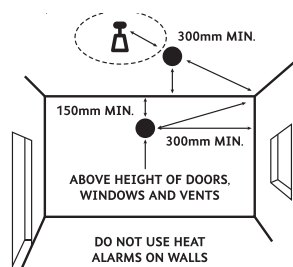


- SMOKE ALARMS FOR MINIMUM PROTECTION
- SMOKE ALARMS FOR INCREASED PROTECTION
- ▽ HEAT ALARMS
- HEARING IMPAIRED SYSTEM

Position of alarms on apex ceilings:



Recommended position of alarms.  
Recommended in a room, corridor or escape route.



## 9. AVOID THE FOLLOWING LOCATIONS

The life of this alarm can be significantly reduced by adverse environments, incorrect location and a failure to regularly clean and maintain it according to the following instructions. Incorrect location and a lack of reasonable care may also cause it to malfunction and will invalidate the warranty.

**NOTE:** Do not store alarms in temperatures below 5 °C and above 30 °C; this may cause beeping and nuisance alarms when first installed. These will clear after a short time when the alarm has become acclimatised. Extended periods under these conditions will reduce the life of the alarms and invalidate the warranty.

1. Do not locate near fans or extractors. These can pull smoke and heat away from the alarms.
2. Do not install in or near high humidity areas such as showers, bathrooms or kitchens where humidity levels exceed 85% or the room temperature exceeds 40 °C or falls below 0 °C. These may cause nuisance alarms and damage the alarm.
3. Do not install alarms in the peak of an "A" frame. This may delay smoke and heat reaching them due to the presence of dead air.
4. Do not install less than 300mm from walls and light fittings when mounted on the ceiling where heat and dead air may delay smoke reaching the alarm.
5. Do not install in insect infested areas.
6. Do not install in areas subjected to heavy concentrations of cigarette smoke that will cause nuisance alarms and the alarm to become contaminated.
7. Do not install smoke alarms in kitchens, boiler rooms and garages where fumes and dust may cause nuisance alarms.
8. Do not install on poorly insulated walls and ceilings where cold air boundary layers could prevent smoke reaching the alarm.
9. Do not install near objects that could prevent smoke and heat reaching the alarm.
10. Do not install within 1500mm of fluorescent light fitting that could trigger nuisance alarms.
11. Do not paint the alarm.

The location of the alarms must be in accordance with applicable building regulations, in particular Part B. Further help and guidance can also be found in BS5839 part 6.

## 10. FURTHER DETAIL ON ALARM LOCATION

1. At least one smoke alarm should be installed in the escape route on all floors of the building.
2. The detection element of smoke alarms should be between 25mm and 600mm below the ceiling, or in the case of heat alarms between 25mm and 150mm
3. Smoke alarms should be at least 300mm from any wall or light fitting.
4. If ceiling mounting is impractical smoke alarms may be installed on walls provided that the area is no longer or wider than 10 metres and the total area does not exceed 50m<sup>2</sup> and that:
  - a. The detection element is between 150mm and 300mm below the ceiling.
  - b. The bottom of the detection element is above openings such as vents, doors and opening windows
  - c. Ensure they are not mounted close to or above heaters or air-conditioning vents.
5. Where smoke alarms are located in a hallway, corridor or landing, the alarm should be no further than three metres from any bedroom door to assist audibility behind closed doors.
6. No point on the ceiling in any room, hallway or corridor should be further than 7.5 metres from any smoke alarm.
7. To give the earliest warning of a developing fire, smoke alarms should be installed in all the rooms of your home and interlinked. (other than those in point 2 of Choice and Location of Alarms above).

## 11. PRODUCT WARRANTY

Fireblitz Ltd guarantees to you, as a purchaser, that the enclosed **Hearing Impaired System** (FH700HIA) will be free from defects in material, workmanship or design under normal use and service for a period of 7 years. This **Control Unit** will last approximately 10 years.

This Guarantee is not assignable. Our liability to you, under this guarantee is limited to repairing or replacing any part which we find to be defective in material, workmanship, or design, free of charge to the customer, upon sending the alarm with proof of date of purchase, postage paid to Fireblitz Ltd, Units 15-17 Manford Industrial Estate, Manor Road, Erith, Kent DA8 2AJ.

**The terms of this guarantee will not apply in the following**

**circumstances:** If the alarm has been modified, dismantled, contaminated, damaged, neglected or otherwise abused or altered following the date of purchase, or if it fails to operate due to incorrect siting, installation, or damage caused by failure to abide by the instructions supplied. It is specifically drawn to the user's attention that substantial periods in alarm will shorten alarm life, during which time it will have provided valuable protection and no claim under the guarantee will be entertained.

The liability of Fireblitz Ltd, arising from the sale of this alarm or under the terms of this guarantee shall not in any case exceed the cost of replacement of the alarm. In no case, shall Fireblitz Ltd be liable for consequential loss or damage resulting from the failure of the alarm or the breach of this or any other guarantee, express or implied or for damage caused by failure to abide by the instructions supplied. This guarantee does not affect your statutory rights.

### Fireblitz Extinguisher Ltd.

Units 15-17 Manford Industrial Estate,  
Manor Road, Erith, Kent DA8 2AJ

Telephone: 01322 342238

TECHNICAL HELPLINE 0800 008 6568

Text on 07885 831239

Email: [customerservices@fireblitz.co.uk](mailto:customerservices@fireblitz.co.uk)

[www.fireblitz.co.uk](http://www.fireblitz.co.uk)