



This innovative self-contained, self-testing LED emergency down lighter uses a single high output white LED with an optical lens. Compact and robust emergency luminaire for interior locations.

- High illumination LEDs in a small compact design.
- Energy- efficient LED emergency downlight.
- IP43 ingress protection.
- Complying with the requirements of EN60598-2-22
- Suitable for incorporation into an emergency lighting system complying with BS5266-1:2011.
- Recessed or surface mounted.
- Non-maintained only.
- Self testing downlight - continuously tests battery voltage and the operation of LED's.

Specification

- IP43 (Interior and sheltered Use)
- Recess or surface mounted as standard
- Self-Test 3 hour duration
- White high output LED light source
- Bi colour LED status indicator
- Cut-out 105mm - 110mm
- Recommended diameter cut-out: 107mm

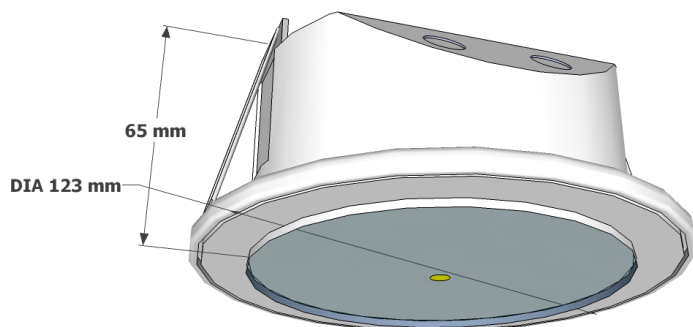


Options

Options

/FC	IP65 cover and gasket kit for face of unit
-----	--

Dimensions



Suitable Applications

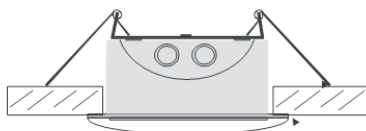
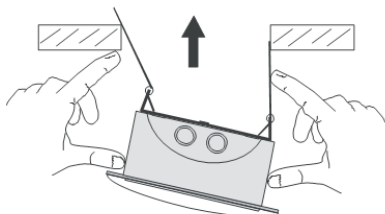
- Suitable for escape routes.
- Suitable for incorporation into an emergency lighting system complying with BS5266-1:2011.
- Suitable for modern and contemporary buildings where high performance and a minimum maintenance are required.

Technical Specification

Model	Mode	Lamp	Power Con	Battery	Duration	Weight	Emerg Output
RLD3NM	Non Maintained	LED	3 W	3.6V 1.5Ah NiMH	3 Hours	430 g	60 Lumens

Installation Notes

- When a recess installation is required a circular cutout of 105mm (minimum), no larger than 110mm (maximum) diameter, is required.
- Install the unit ensuring that the spring clips are positioned as shown in image below



Materials / Finish

- Manufactured in a Bayblend enclosure.
- Fitted with a clear polycarbonate diffuser.

Catalogue Numbers

RLD3NM

Non Maintained