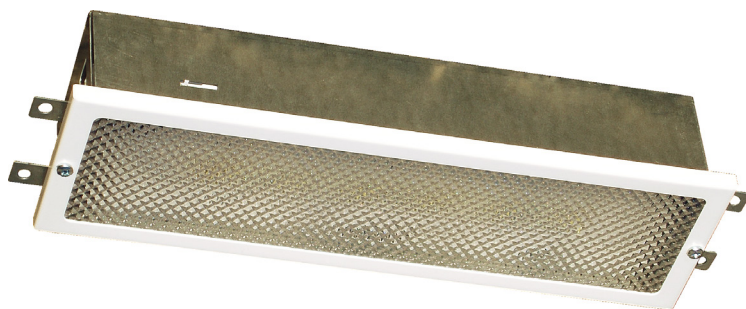


The X-FML light uses high illumination white LED's in a small compact shell.



- Comprising of a stove enamelled steel base.
- Fitted with clear prismatic diffuser retained by a white bezel.
- 850° C Hot-wire test, defined by ICEL
- Diffuser is attached by captive screws.
- Rated IP20.
- Complying with the requirements of EN60598-2-22
- Suitable for incorporation into an emergency lighting system complying with BS5266-1:2005 the
- X-FML light is available in white as standard other finishes available
- Opal diffuser option available.
- Switchable maintained/non maintained as standard.

## Specification

- Chrome and gold finishes available
- Self Test 3hr duration
- Hinged gear tray
- Recess mount
- White high output LED's
- IP20

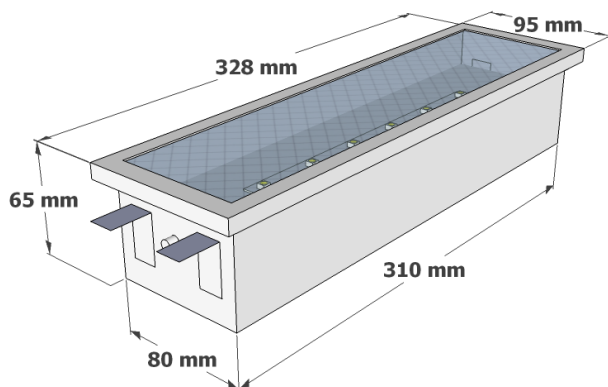


## Options

### Options

/BR	Brass finish
/CR	Chrome finish
/OP	Opal Diffuser
/DALI	DALI

## Dimensions



## Suitable Applications

- Suitable for escape routes and intersections.
- Suitable for incorporation into an emergency lighting system complying with BS5266-1:2011.

## Technical Specification

Model	Lamp Type	Power Con	Battery	Duration	Weight	Emerg Output
X-FML3M	6 CREE LED's	7 VA	3.6V 3Ah Ni-Cd	3 Hours	1.20 KG	150 Lumens
X-FML3/SL	110V ACDC Slave					
X-FML3/230	Mains Only / 230V AC static inverter					

## Installation Notes

- Cut out size: 310 x 81mm.
- The gear tray is hinged for ease of installation and is easily removable to allow first fix of the base.

## Materials / Finish

- Comprising of a stove enamelled steel base.
- Fitted with clear prismatic diffuser retained by a white bezel.

## Catalogue Numbers

X-FML3M	6 CREE LED's
X-FML3/SL	110V ACDC Slave
X-FML3/230	Mains only / 230V AC static inverter