

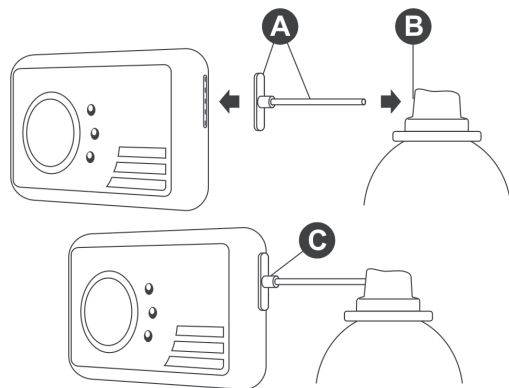
Mark tests used

1	2	3	4
5	6	7	8
9	10	11	12
13	14	15	16
17	18	19	20
21	22	23	24
25	26	27	28
29	30	31	32
33	34	35	36
37	38	39	40

This product enables you to carry out a recommended annual bump test to ensure the sensor in a CO alarm is responding to CO.

Directions

- 1 Fit the straw into the nozzle **B**
- 2 Fit the adaptor **A** onto the straw
- 3 Fit the adaptor into the side of the alarm **C**
- 4 Set alarm to sensor test mode, by pressing the test button until the fault LED flashes yellow and the alarm sounds for a second time
- 5 Depress the nozzle for 1 second. The CO alarm should activate within 10-20 seconds
- 6 If the alarm fails to respond, repeat the test above, depressing the nozzle for 2 seconds
- 7 If alarm still fails to respond it may be faulty
- 8 After activation, the alarm will revert to its normal operating mode automatically
- 9 Remove straw and adaptor from alarm



CAUTION

- Pressurised container: protect from sunlight and do not expose to temperatures exceeding 50° C (122° F)
- Do not pierce or burn, even after use
- Store cans in a cool well ventilated place
- Do not breathe gas
- Carbon Monoxide may cause harm to the unborn child
- Dispose of can safely
- Read label directions and associated literature before using this product
- No liability can be accepted for incorrect use
- CO is a toxic, invisible and odourless gas
- Use only as directed
- Material safety data sheet available upon request

NOTE: It is normal for this can to feel very light or empty. However, it will deliver up to 40 tests by following the instructions.

First Aid

If inhaled, or suspicion of any exposure, remove casualty to fresh air and seek medical attention.

In normal use, as directed, the amount of gas released into a room is harmless.