



HS1 130K/HS1 130E Series

Constellation II

The Phoenix Constellation II HS1130 series is designed and tested to the latest and prestigious European test standards for both Fire and Security Protection. Approved by the Association of Insurance Surveyors (AIS).

- **Security Protection** - Tested to the prestigious European Grade 1 Security standard (EN1143-1 ECB.S Certified) giving cash cover of £10,000 or Valuables cover of £100,000*.
- **Fire Protection** - Tested to the European LFS 60P Fire protection standard (EN15659 ECB.S Certified) giving 60 minutes fire protection for paper documents.
- **Locking** - Fitted with a high security double bitted VdS class 1 keylock (HS1 130K series) or high security VdS class 1 (SECU SELO-A) electronic lock with time delay function (HS1 130E series).
- **Fixing** - Ready prepared for floor fixing, with fixing bolts for concrete supplied.
- **Construction** - Double wall construction with high grade concrete infill. Door thickness 105mm, wall thickness 77mm. Anti drill plates and integrated relocker protection.
- **Colour** - Finished in a high quality scratch resistant paint RAL9003 White.

OPTIONAL EXTRAS AVAILABLE
Height adjustable shelves
Secu Changeable Key Lock
Secu B dual control/Time delay electronic lock
Cut key only available at time of order unless Secu changeable key lock option is specified



HS1132E



HS1133K



HS1131E



HS1130E



HS1130K



HS1130E



OPTIONAL

*Ratings are approximate only and may vary due to area conditions and location. Please check with your underwriter.

Back

The body is constructed of a unique design of the barrier material comprising high resistance composite materials, with metallic fibres and layers of reinforcing armour to protect against drilling, cutting and oxyacetylene.

Door

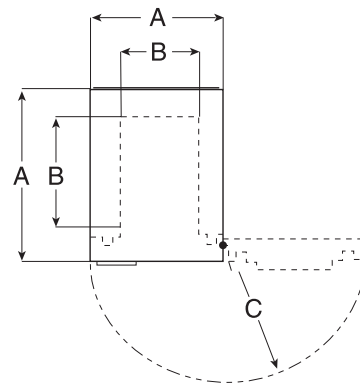
The door is constructed of barrier material comprising high resistance composite materials, with metallic fibres and layers of reinforcing armour to protect against drilling, cutting and oxyacetylene attack. In addition to this, high quality drill resistant steel and glass plates cover all lock areas.

Boltwork

All sizes have 3 way moving espagnolette boltwork with 30mm bolts securing into the top and bottom door frame.

Guarantee

Every Phoenix Constellation II safe has a 2 years on site guarantee against manufacturing defect.



● Dimensions stated as:

- A External height x width x depth
- B Internal height x width x depth
- C Door swing/Handle depth
- D Weight
- E Capacity
- F No of shelves
- G Packaged Dimensions & Weight

● Constellation II HS1131K/E

- A 1100 x 555 x 447mm
- B 940 x 407 x 388mm
- C 490mm/50mm
- D 246kg
- E 149 Litres
- F 1
- G

● Constellation II HS1132K/E

- A 1336 x 701 x 580mm
- B 1142 x 527 x 386mm
- C 630mm/50mm
- D 375kg
- E 232 Litres
- F 2
- G

● Constellation II HS1133K/E

- A 1652 x 701 x 580mm
- B 1473 x 527 x 386mm
- C 630mm/50mm
- D 490kg
- E 300 Litres
- F 3
- G

DEALER'S STAMP

All weights and sizes are approximate.

All Phoenix Fire Safes come with a Free lifetime 'after the fire' replacement warranty and a full two year materials and labour warranty.

Phoenix policy is one of constant improvement. We therefore reserve the right to alter any part of the specification achieved in this publication without incurring any obligation.



Certificate No. 1059

HS1130 / 05 13 GB