

## APX-16 Waterproof IP68 Rated Keypad



APX-16

*The APX-16 is a new generation multiple input keypad offering a standard 4-8 digit pin code with the option to include a proximity reader for up to 1200 users with the AXP-16/PROX.*

The range supports pin only, card only or a combination of pin and card operation with two relay outputs, lock and alarm. The keypad accepts a 125KHZ EM proximity card and uses two zones. Zone 1 offers up to 1100 Pin & Card holders and Zone 2 allows up to 100 Pin & Card holders.

The APX-16 design has a lock output of up to 2 amps and an alarm output of 20 amps, both relays are normally open and closed settable. The keypads accept both 12-24v ac and dc power inputs.

The unit is IP68 rated which means it can be installed in the most extreme of environments as the wiring has total protection against the ingress of dust and the unit is protected against long periods of immersion under pressure. The strong Zinc Alloy Electroplated case also offers a reasonable amount of protection against vandalism.

The keys are back lit for easy visibility in low lit areas such as porches, under canopies and in areas with little or no street lighting.

The slim line keypad is just 58mm wide enabling it to be fitted to most architraves and comes with a two year warranty.

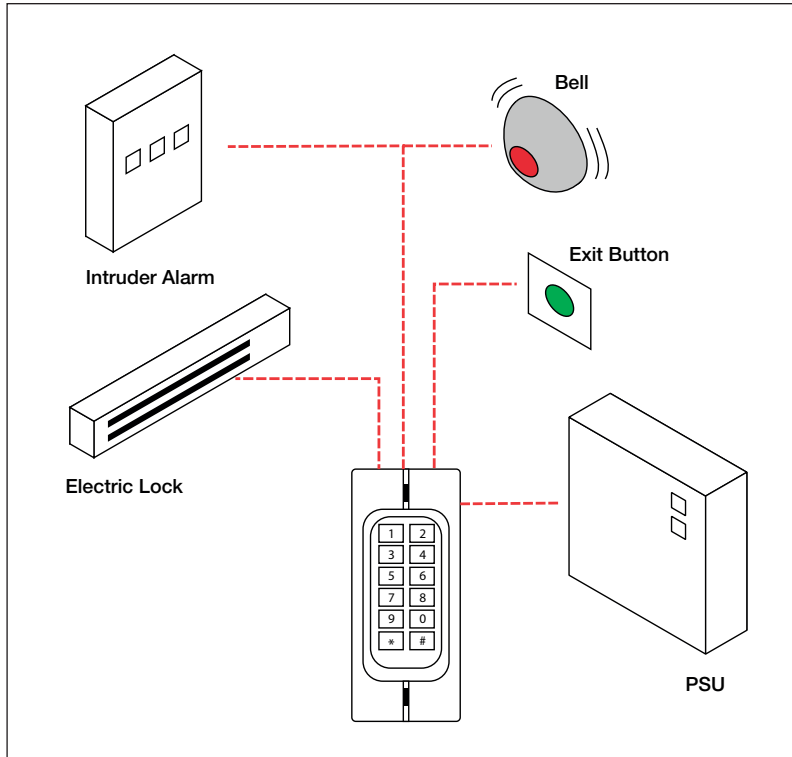
### Features & Benefits

- Two relays operation, lock and alarm
- Pulse mode, Toggle mode
- Zone 1: up to 1100 Pin & Card holders
- Zone 2: up to 100 Pin & Card holders
- Standalone keypad card reader
- Pin length: 4-8 digits
- Card type: 125KHZ EM card
- Block enrolment, can enrol 1500 consecutive cards within 10 seconds
- Waterproof, conforms to IP68
- Strong Zinc Alloy Electroplated anti-vandal case
- 1200 uses, supports Card, PIN, Card + PIN
- Backlight keypad
- 12-24V AC/DC power input

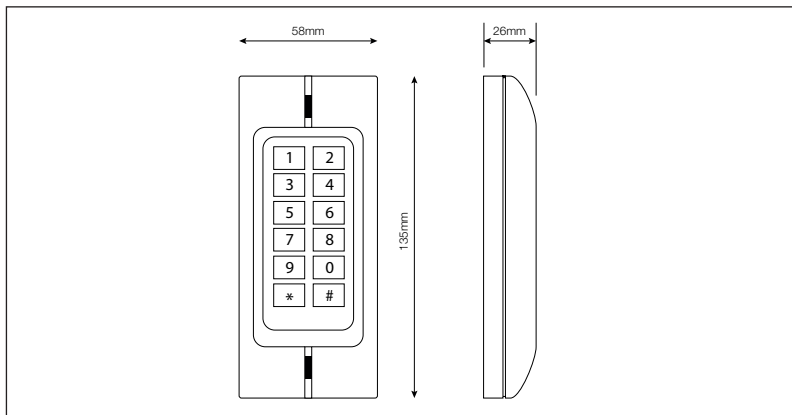
### Options

APX-16	Keypad only
APX-16/PROX	Keypad and proximity with 10 proximity cards

## APX-16 Waterproof IP68 Rated Keypad



<b>APX-16</b>	
Operating Voltage	12 - 24v AC/DC
User Capacity	1200 (1100 for Zone 1, 100 for Zone 2)
Keypad	12 Keys, 2 x 6 digit
Card Type	EM 125 KHZ card
Card Reading Distance	3 - 6 cm
Active Current	<60mA
Idle Current	25 ± 5mA
Lock Output Load	Max. 2A
Alarm Output Load	Max. 20A
Operating Temperature	-15° to + 60°C
Operating Humidity	5% to 95% RH
Environment	Conforms to IP68
Adjustable Door Relay Time	0 - 99 seconds
Adjustable Alarm Time	0 - 3 minutes
Relay	2 relays, NO, NC, COM
Wiring Connections	Electric Lock, Exit Button, DOTL, External Alarm
Dimensions	L135 x W58 x D26 mm
Net Weight	550g



For further information contact:  
 Securefast Plc  
 Unit 6 & 7 Cedar Business Centre  
 Avon Road, Cannock  
 Staffordshire WS11 1QJ

call > 01704 502 801

email > sales@tatecolson.co.uk

visit > www.securefast.co.uk