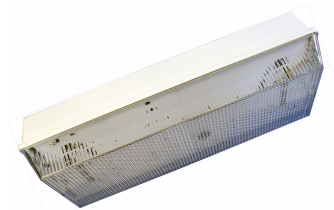


The JP Light is a general purpose, cost effective emergency luminaire suitable for external and arduous internal environments. The JP Light, pictured at the front, is most suitable for industrial/commercial applications and the curvature of the JPX Light makes it more suitable for decorative prestigious locations. Comprising of a moulded self-extinguishing polycarbonate base fitted with a clear prismatic diffuser, suitable for use on escape routes (850 degrees C Hot-wire test, defined by ICEL). The diffuser is attached by captive screws and gasketed to the base to provide a seal to IP65. The gear tray is hinged for ease of installation and is easily removable to allow first fix of the base. Cable knockouts are provided in the ends and a BESA entry in the base complying with the requirements of EN60598-2-22 and suitable for incorporation into an emergency lighting system complying with BS5266-1:2005. The JP/JPX Light can be fitted with universal legend kits (part no. ULK) making them suitable for use as an external IP65 exit sign. Both units can also be readily recessed with the optional recessing flange; available in white or a full range of alternative finishes including and British standard or RAL colour.

- IP65 (Weatherproof)
- Vandal Resistant
- Polycarbonate Base
- Prismatic Diffuser
- Hinged Gear Tray



- Can be recessed
- IP65 Exit Signs
- Self-Contained
- Centrally Supplied
- JPD – Die cast base

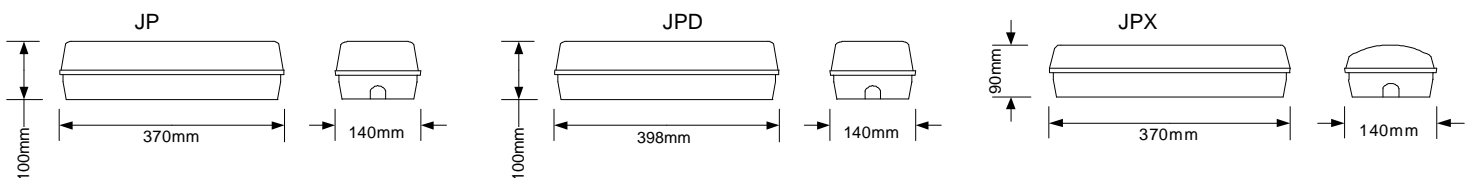


■ JP8M/-25 for use in cold store area's temperatures 0 to minus 25 degrees C

	Mode	Lamp Type	Power Con	Battery	Duration	Weight	Emerg Output	Dimensions
JP8NM / JPX8NM	Non Maintained	8W T5	8 VA	2.4V 4Ah	3 Hours	1.2 Kg	100 Lumens	
JP8M / JPX8M	Maintained	8W T5	20 VA	2.4V 4Ah	3 Hours	1.35 Kg	100 Lumens	JP – 370 x 140 x 100
JP8S / JPX8S	Sustained (Combined)	2 x 8W T5	20 VA	2.4V 4Ah	3 Hours	1.4 Kg	100 Lumens	JPX – 370 x 140 x 90
JP8M/-25	Maintained (-25 Degree)	8W T5	20 VA	2.4V 4Ah	3 Hours	1.35 Kg	100 Lumens	
JP8/180 / JPX8/180	As requested	8W T5	9 VA / 21 VA	3.6V 4Ah	3 Hours	1.37 Kg	180 Lumens	JPD – 396 x 140 x 100
JP8/SL/* / JPX8/SL/*	Mains or Slave	8W T5	7 - 20 VA			1 Kg	270 Lumens	
JPD8M / JPD8NM		All variants available						2 Kg

\* Please suffix voltage required i.e. 24, 50, 110, 230 /ST Self Test

R/BEZ – Recessing Kit



Photometric Data	Mounting Height (M)	ESCAPE ROUTE 1.0 LUX MIN (Normal Risk)				OPEN AREAS 0.5 LUX MIN (Anti-Panic)			
		←→	←→	←→	←→	←→	←→	←→	←→
NM / M	2.5	1.71	5.31	4.89	1.49	2.71	7.41	6.49	2.39
	4.0	-	4.01	3.29	-	1.91	7.31	6.49	1.59
	6.0	-	-	-	-	-	4.61	3.99	-
AC/DC	2.5	2.7	7.3	6.39	2.3	2.9	8.7	7.0	2.6
	4.0	2.1	7.3	6.5	1.7	2.6	9.9	8.3	2.2
	6.0	-	-	-	-	1.6	10.1	8.9	1.3