

Touch Bar Panic Exit Hardware - EN1125:2008

SED603

Touch Bar Panic Latch - Three Point Latching

Touch bar activated three point panic latch with the following features:

- Fire rated to EN1634-1
 - Can be cut down on site suitable for doors up to 1240mm wide and up to 2450mm high
 - Vertical shoot bolts with aluminium covers can be cut down on-site
 - Side Pullman latches top and bottom with adjustable keep for perfect alignment
 - Non handed, suitable for left or right hand applications
 - Suitable for single doors or the active leaf of a rebated double door
 - Universal keep for timber & aluminium frames
- For steel and uPVC doors please see optional keeps on page 17
 - Additional length bar can be supplied for doors up to 1540mm wide
 - Optional hold-back available enabling the door to be put into free access (order additional **SED600/HB**)
 - Optional Microswitch concealed in the tail end of the unit to integrate with an access control system (order additional **SED600/HB**)
 - 240 hour salt spray corrosion resistance on all finishes

Finishes

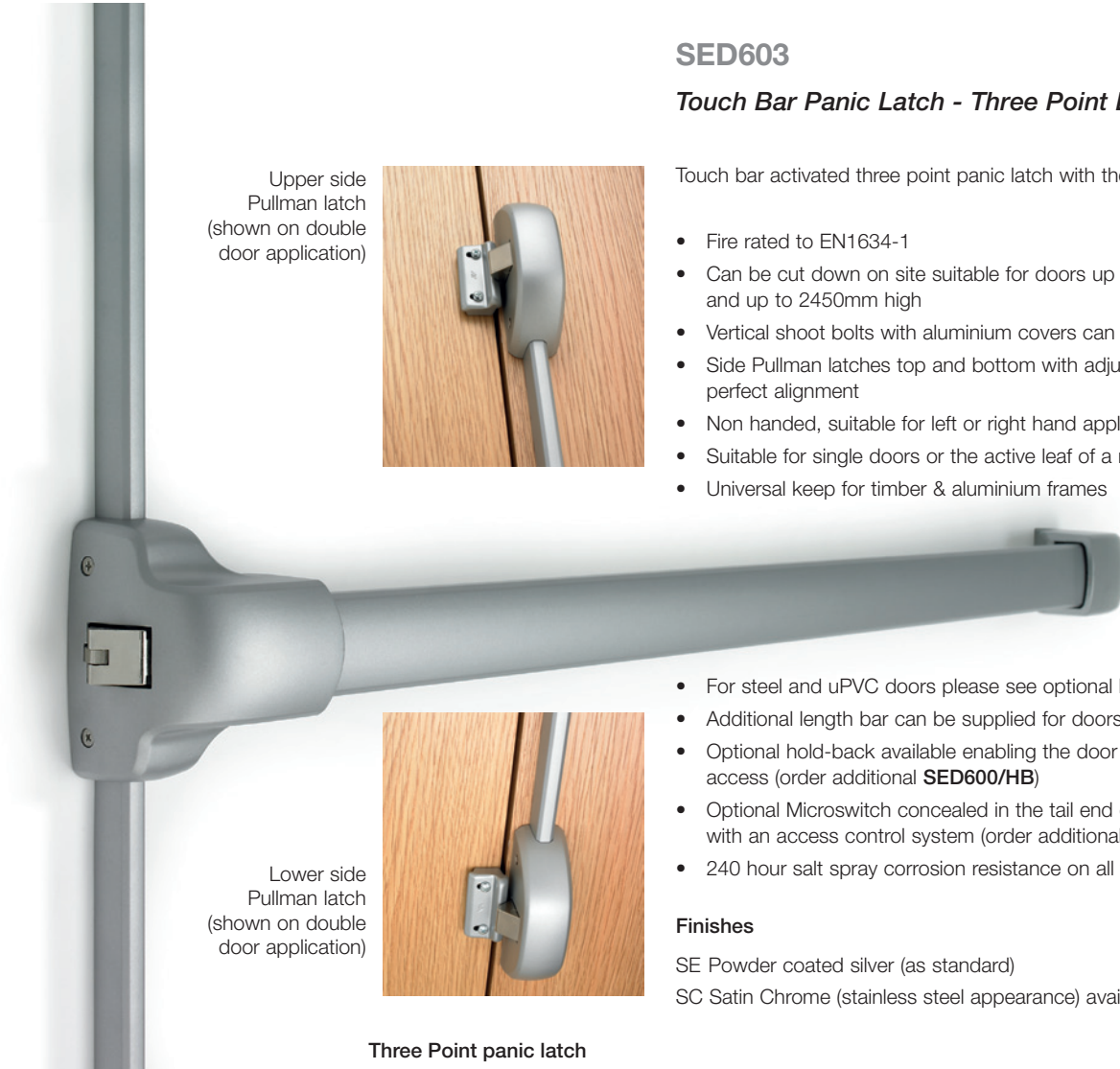
SE Powder coated silver (as standard)

SC Satin Chrome (stainless steel appearance) available to order

Upper side Pullman latch (shown on double door application)

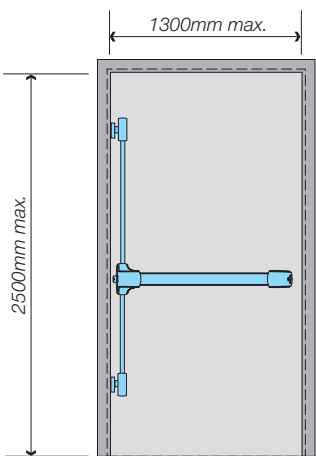


Lower side Pullman latch (shown on double door application)



Three Point panic latch

Product ref:	Description	EN1125 Classification Code	Fire Door Performance			
			With OAD Timber	With OAD Steel	Without OAD Timber	Without OAD Steel
SED603/HM/SE	Three point latching - silver	376B1422AA	1hr	TBC	1hr	1hr
SED603/HM/SC	Three point latching - satin chrome	376B1422AA	1hr	TBC	1hr	1hr



LH application shown

