



EN14604:2005

RF10-PRO

MODEL: HSA/BP/RF10-PRO

LONG LIFE BATTERY OPERATED PHOTOELECTRIC SMOKE ALARM WITH WIRELESS INTERCONNECT

MAIN FEATURES:

- Photoelectric Sensor for Slow Smouldering Fires
- Wireless Interconnection Using Radio Links (Self Learn pairing)
- 10 year Lithium Battery
- Hush Feature
- Power & Alarm Test Button
- Low Battery Warning
- Loud 85db alarm signal
- Supplied with wall plugs & screws
- Pre-warming fault signal
- Compatible with Control Unit HSSA/CU/RF10-PRO

This instruction leaflet contains important information on the correct installation and operation of your smoke alarm. Read this leaflet fully before attempting installation and retain for future reference.

SPECIFICATION

Power Source:	3V Lithium Battery
Battery Life:	10 Year (sealed)
Sensitivity to smoke:	0.08-0.18db/m
Transmitting & receiving distance:	max. 80metres (outer space) max. 50metres (indoor)
Max. Wireless interconnection:	20 units
Operation Temperature:	0°C-40°C
Ambient Humidity:	10%-90%
Alarm Sound Level:	85 Decibels at 3 metres
Approval:	Certified to BS EN14604:2005
Transmit & Receive frequency:	868MHz

LOCATING THE SMOKE ALARM

This smoke alarm is a photoelectric alarm with built-in wireless interconnection. It can transmit and receive with other RF10-PRO alarms.

If your dwelling is on a single storey, for minimum protection you should fit an alarm in the hallway between the living areas and sleeping areas. Place it as near to the living areas as possible and ensure the alarm is audible when the bedrooms are occupied. See Figure 1 for examples.

If your dwelling is multi-storey, for minimum protection one alarm should be fitted at the bottom of the staircase with further alarms fitted on each upstairs landing. This includes basements but excludes crawl spaces and unfinished attics. See Figure 2 for examples.

NOTE: For maximum protection an alarm should be fitted in every room (except kitchen, bathroom and garage). **DO NOT FIT AN ALARM IN THE KITCHEN or BATHROOM**, as cooking fumes or steam may trigger the alarm. **DO NOT FIT ALARM IN A GARAGE**, as exhaust fumes are likely to set it off.

POSITIONING THE SMOKE ALARM

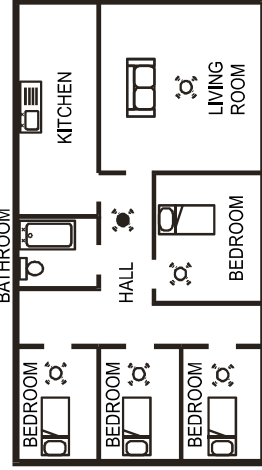
Ceiling Mounting

As hot smoke rises and spread out, it is advisable to mount on a ceiling in a central position. Avoid areas where there is no air circulation. E.g. Corners of rooms and keep away from items which may prevent the free flow of air. Place the unit at least 300mm from and light fitting or decorative object which might obstruct smoke entering the alarm. Keep at least 300mm away from walls. See Figure 3i.

Wall Mounting

Do not mount tight into the corners. Put the top edge of your smoke alarm between 150 and 300mm below the ceiling. Keep at least 300mm from room corners. See Figure 3i

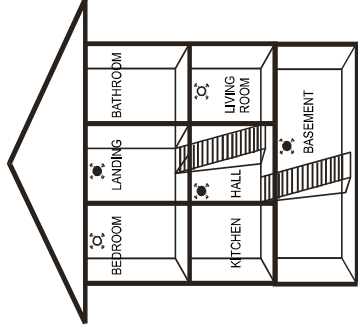
FIGURE 1 – SINGLE STORE DWELLING



On a Sloping Ceiling

In areas with sloping or peaked ceilings install your Smoke Alarm 900mm from the highest point measured horizontally because "dead air" at the apex may prevent smoke from reaching the unit. See Figure 3ii.

FIGURE 2 – 2/3 STOREY DWELLING



KEY

☉ MAXIMUM PROTECTION

☐ MINIMUM PROTECTION

Areas to be avoided include the following:

- Situations where the temperature may fall below 0°C or rise above 40°C for extended periods
- Humid areas such as bathrooms, kitchens, shower rooms where the relative humidity may exceed 90%
- Near a decorative object, door, light fitting, window moulding etc., that may prevent smoke from entering the alarm.
- Fume filled environments such as garages. Exhaust gases may cause false alarms.
- Adjacent to or directly above hot components such as radiators or wall vents that can affect the direction of air currents.
- In very dusty or dirty environments such as workshops.
- Locate unit at least 1.5m and route wiring at least 1m away for fluorescent light fittings as electrical "noise" and/or flickering may affect the unit. Do not wire into the same circuit as fluorescent lights or dimmers.
- Do not locate in insect infested areas. Insects and contamination on the Smoke Alarm sensor can increase its response time.

Figure 3i - Positioning the smoke / heat detector

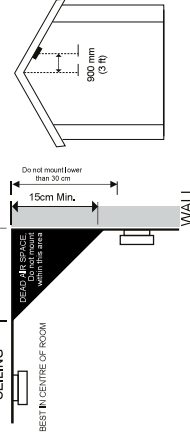


Figure 3ii

PAIRING THE SMOKE ALARM

This smoke alarm is powered by battery and requires no additional wiring.

On First Alarm

1. Attach the mounting plate to the alarm. (This is done by lining up the tab on the mounting plate with the arrow on the smoke alarm)
2. Turn clockwise to activate battery.
3. Press black button and hold for approx 5 seconds. (LED will go RED for 30 seconds) Alarm is now in pairing mode.

On all additional alarms

1. Press black button twice (LED will FLASH RED 5 times)
2. The alarms are now paired

IMPORTANT!

The Wireless Pairing Button is only used for wireless interconnection.



INSTALLING THE SMOKE ALARM

- Attach the upper smoke alarm unit firmly into the mounting bracket
- Place the mounting plate on the ceiling, and use the screws to secure the mounting bracket.
- Having established the mounting location ensure that there are no electrical wiring or pipe work in the area adjacent to the mounting surface.
- Take the mounting bracket and mark the two mounting holes' locations.
- Drill holes in the positions marked.
- Insert wall plugs into the drilled holes.
- Screw mounting bracket to mounting surface. **DO NOT OVERTIGHTEN.**

Once mounting plate is secured to ceiling line up the alarm with mounting plate and twist clockwise to attach mounting plate to alarm. This should now be secured to the ceiling.

Lock in position by giving a clockwise quarter turn. This clockwise turn can switch on the sealed-in battery in same time, i.e. power on the device simultaneously

Test the alarm for correct operation by holding the test button for 20 seconds, once the alarm is integrated and installed.

OPERATING YOUR SMOKE ALARM

Once the smoke alarm has been installed a small indicator light (LED), positioned beside the test button, should flash approximately once a minute in normal operation. If smoke is detected the unit will emit a loud pulsating alarm until the air is clear.

TESTING YOUR SMOKE ALARM

It is recommended that you test your smoke alarm once a week to ensure the detector is working correctly. Push and hold the test button for up to 20 seconds to trigger all interconnectable alarms. A pulsating alarm should sound to indicate the correct function. During the alarm condition the indicator light will flash quickly.

After installation and after reoccupation of the dwelling following a vacation etc, check all your alarms.

COMMON CAUSES AND AVOIDANCE OF FALSE ALARMS

The Smoke Alarm may be triggered by steam, condensation, normal smoke or fumes. Small insects getting into the smoke alarm chamber may cause intermittent alarms. Keep away from the sources to avoid nuisance alarms. (See "Areas to be avoided" in the "Positioning the smoke alarm" section.)

Hush or Silence Feature

This Smoke Alarm has a built-in Hush or Silence feature incorporated into the Test button.

If cooking or other non-hazardous sources cause the alarm to sound, it can be temporarily silenced by pressing the test button and holding for approximately 1 second. The alarm will enter a dormant period for 10 minutes. The red LED will flash every 10 seconds to indicate the sensitivity is reduced. At the end of the hush period the alarm will give two short beeps, the alarm will then reset to normal sensitivity.

NOTE - If the smoke density increases during this period (i.e. from a fire) the unit will go into alarm mode.

LOW BATTERY WARNING

If the smoke detector emits a short 'beep' once every 40 seconds the battery is at the end of its life and this detector should be replaced immediately. This low voltage warning will be given for at least 30 days. If the red indicator light (LED) does not flash every 40 seconds then replace the whole smoke alarm unit.

In this case, the other interconnectable units in the system which are not in low battery condition will chirp for a few seconds once an hour as long as the detector with the 'dead' battery beeps.

BATTERY SEALED-IN NOT FOR REPLACEMENT

ACTION IN THE EVENT OF A FALSE ALARM

- If there is a false alarm, simply press the test / hush button on the cover to mute the unit for 10 minutes.
- Check the house carefully in case there is a small fire smouldering somewhere.
- You should get your family into a safe place before your investigation.
- Leave the building as quickly as possible. Check room doors for heat or smoke. Do not open a hot door. Use an alternate escape route. Crawl along the floor, if possible, through a wet cloth or hold your breath. Do not stop to collect anything.
- If there are frequent nuisance/ false alarms it may be necessary to re-locate the device. If for some reasons the alarm continues to give false alarm, clean the alarm unit, see Section - MAINTAINING YOUR SMOKE ALARM). If cleaning the alarm does not correct the problem it can be returned to the place where you bought it.

IN THE EVENT OF FIRE

- Leave the building as quickly as possible. Check room doors for heat or smoke. Do not open a hot door. Use an alternate escape route. Crawl along the floor, if possible, through a wet cloth or hold your breath. Do not stop to collect anything.
- Meet at a pre-arranged meeting place outside the dwelling and check everybody is there.
- Call the Fire Brigade from outside the building immediately. The brigade should be summoned regardless of the size of the fire and regardless of whether there is a facility for transmission of alarms to a remote manned centre.
- Do not go back inside a burning building and wait for the Fire Brigade to arrive.

MAINTAINING YOUR SMOKE ALARM

Clean your smoke alarm regularly to prevent dust build up. This can be done using a vacuum cleaner with the brush attachment. Clean gently around the front grilled section and sides. Never use water, cleaners or solvents since they may damage the smoke alarm.

When the battery is low, replace with a new smoke alarm.

If the alarm fails to operate properly, please return to the wholesaler you purchased it from.

NOTE: THE APPARATUS SHALL NOT BE EXPOSED TO DRIPPING OR SPLASHING.

PRE-WARNING FAULT SIGNAL (YELLOW LED)

When there is no fire or smoke accident, if the LED on front cover light is on yellow, it means there may be dust inside or the unit cannot function properly. This is a pre-warning signal that the user should replace the unit with a new smoke alarm.

IMPORTANT SAFEGUARDS

Installation of your smoke alarm is only one step in your safety plan. Other important steps should be taken to further improve your safety:

- Install the smoke alarm properly, following this instruction leaflet
- Test your smoke alarm weekly
- Replace with a new smoke alarm immediately once depleted
- Do not smoke in bed
- Keep matches & lighters away from children
- Store flammable materials in a proper manner and never use them near naked flames or sparks
- Maintain emergency equipment such as Fire Extinguishers, escape ladders etc and ensure all occupants know how to use them correctly.
- Plan an escape routes from your building in advance and ensure all occupants are aware of them. Re-enforce this awareness periodically through-out the year.
- Make sure escape routes remain free of any obstructions.
- A warning that batteries (battery pack or batteries installed) shall not be exposed to excessive heat such as sunshine, fire or the like.



WARNING! IF THERE IS ANY QUESTION AS TO THE CAUSE OF AN ALARM IT SHOULD BE ASSUMED THAT THE ALARMS DUE TO AN ACTUAL FIRE AND THE DWELLING SHOULD BE EVACUATED IMMEDIATELY.

THIS PRODUCT IS A SEALED UNIT AND CANNOT BE REPAIRED – IF THE UNIT IS TAMPERED WITH IT WILL INVALIDATE THE WARRANTY. IF THE UNIT IS FAULTY PLEASE RETURN IT TO YOUR ORIGINAL SUPPLIER WITH YOUR PROOF OF PURCHASE.

SMOKE ALARM LIMITED WARRANTY

These Smoke Alarms are warranty to be free from defects in materials and workmanship under normal use and service for a period of 5 years (exclude battery) from date of purchase. The company will not be obligated to repair or replace parts which are found to be in need of repair because of misuse, damage or alterations occur after the date of purchase. Send the Smoke Alarm with proof of purchase, postage and return postage prepaid, to local distributor. The liability of the company arising from the sale of this Smoke Alarm shall not in any case exceed the cost of replacement of Heat Alarm and in no case shall the company be liable for consequential loss or damages resulting from the failure of the Smoke Alarm.

HISPEC ELECTRICAL PRODUCTS LTD. SHALL HAVE NO LIABILITY FOR ANY PERSONAL INJURY OR PROPERTY DAMAGE, OR ANY SPECIAL INCIDENTAL, CONTINGENT OR CONSEQUENTIAL DAMAGE OF ANY KIND RESULTING FROM A FIRE. THE EXCLUSIVE REMEDY FOR BREACH OF THE LIMITED WARRANTY CONTAINED HEREIN IS THE REPAIR OR REPLACEMENT OF THE DETECTIVE PRODUCT AT HISPEC ELECTRICAL PRODUCTS LTD. OPTION. IN NO CASE SHALL HISPEC ELECTRICAL PRODUCTS LTD.'S LIABILITY UNDER ANY OTHER REMEDY PRESCRIBED BY LAW EXCEED THE PURCHASE PRICE. YOUR HEAT ALARMS IS NOT A SUBSTITUTE FOR PROPERTY DISABILITY, LIFE OR OTHER INSURANCE OF ANY KIND. APPROPRIATE COVERAGE IS YOUR RESPONSIBILITY. CONSULT YOUR INSURANCE AGENT.

This does not affect your statutory rights. This alarm is only suitable for residential dwellings and is not suitable for commercial or industrial use.

Waste electrical products should not be disposed of with normal household waste. Please recycle where facilities exist. Check with your Local Authority or retailer for recycling advice. New regulation will encourage the recycling of Waste from Electrical and Electronic Equipment (European "WEEE Directive" effective August 2005).