

# FireAngel®

## SB1 OPTICAL SMOKE ALARM

### USER MANUAL

CE 18  
0359-CPR-00649  
EN 14604:2005 +AC:2008  
Smoke alarm devices  
DoP: SADOP-SB1-01

Optical smoke alarms are suitable for detecting slow smouldering fires. Like other smoke alarms, they can be subject to nuisance alarms from steam and should not be placed near bathrooms.  
For the earliest warning, we recommend smoke alarms are fitted in all rooms where the temperature is between 0°C (32°F) and 40°C (104°F). Prolonged exposure to temperatures outside those stated above will reduce product life.  
Check with local building and fire regulations for your property, to ensure compliance.  
This smoke alarm is suitable for use in mobile homes and caravans. This smoke alarm is not intended for any non-residential, commercial or industrial application, nor for any other purpose than described.

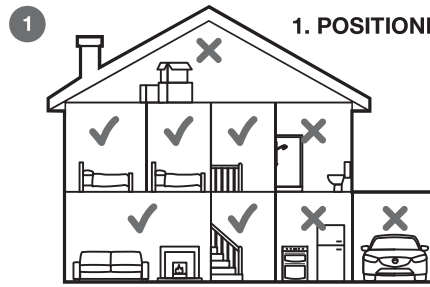
#### Technical Support

Online: [www.fireangel.co.uk/support](http://www.fireangel.co.uk/support)  
E-mail: [technicalsupport@fireangel.co.uk](mailto:technicalsupport@fireangel.co.uk)  
Phone: 0800 141 2561 (EIRE Phone: 1-800 523 171)  
Note: This user manual is also available in large text and other formats. Please email: [technicalsupport@sprue.com](mailto:technicalsupport@sprue.com) or call 0800 141 2561 for further information.

© 2018 Sprue Safety Products Ltd.  
Vanguard Centre, Coventry CV4 7EZ,  
United Kingdom.  
[www.sprue.com](http://www.sprue.com)

GN5040R4

## 1. POSITIONING

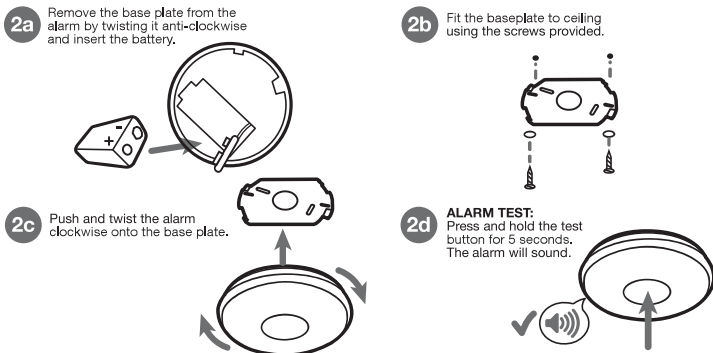


Your smoke alarm is suitable for the landing, hallway, bedroom, living room and dining room.

Smoke alarms should be sited at least 300mm from light fittings and walls. Ideally as central as possible in the room. Smoke alarms should be positioned at no more than 600mm vertically below the highest point in the room. If positioning your smoke alarm on the wall, the top of the detection element must be between 150mm and 300mm below the ceiling, and at least 300mm from any neighbouring wall.



## 2. INSTALLATION



The red operational LED on the front of the alarm should flash behind the plastic surface once every 32 seconds (approx.) to show that the alarm is active.

## 4. SILENCE FEATURE

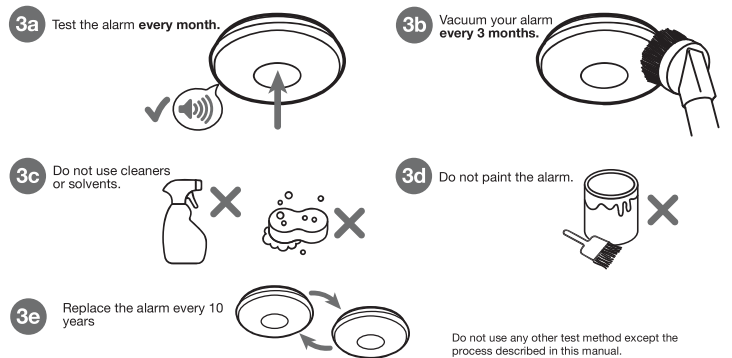
In a known false alarm, the alarm can be silenced temporarily.



Smoke alarms can react to cooking fumes or other non emergency situations. Your alarm features 'Silence' technology. In the event of a known false alarm you can temporarily silence it by pressing the test button. The red operational LED on the front of the alarm will flash behind the plastic surface once every 8 seconds to show that it is in Silence mode. Your alarm will automatically return to full sensitivity after 8 minutes. The alarm will sound continuously and the Red operational LED flashes behind the plastic surface every second when the alarm senses smoke.

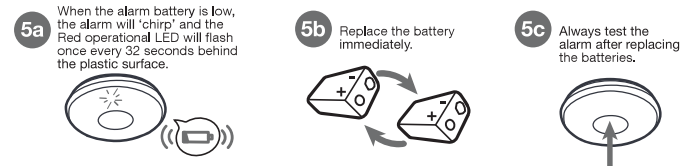
**NEVER IGNORE ANY ALARM.** If an alarm is sounding, it is warning you of a potentially hazardous situation. Do not ignore it. Ignoring the alarm may result in injury or death. If your smoke alarm activates and you are not absolutely certain of the source of smoke, get everyone out of the house immediately.

## 3. MAINTENANCE



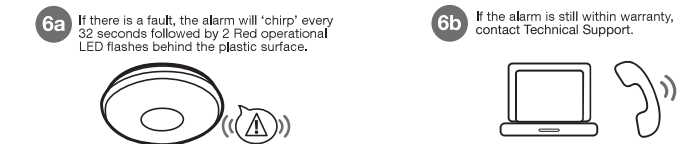
Do not use any other test method except the process described in this manual.

## 5. LOW BATTERY WARNING



Your alarm requires 1 x 9V (FP3) battery. Under normal use, the battery should last approximately one year. Use of a battery other than those recommended here may have a detrimental effect on the alarm: DC9V Gold Peak GP1604S, Raymax 6F22.

## 6. FAULT INDICATION



## TROUBLESHOOTING GUIDE

<p><b>If your smoke alarm does not sound during testing:</b></p>	<ul style="list-style-type: none"> <li>• Check that your battery is connected.</li> <li>• If testing after first installation, allow a few seconds for the alarm to settle.</li> <li>• Push and hold the centre of the test button firmly.</li> <li>• If the alarm has been silenced and is in low sensitivity mode it may not test. Wait 15 minutes then try again.</li> <li>• Replace the battery.</li> </ul>
<p><b>If your smoke alarm activates when no smoke is visible:</b></p>	<ul style="list-style-type: none"> <li>• Check the location of your smoke alarm.</li> <li>• Clean the smoke alarm.</li> </ul>
<p><b>If your smoke alarm sounds unusual or 'chirps' intermittently:</b></p>	<ul style="list-style-type: none"> <li>• Check the location of your smoke alarm.</li> <li>• Clean the smoke alarm.</li> <li>• Check that your smoke alarm is definitely the source of the chirping; make sure the noise isn't coming from another alarm.</li> </ul>
<p><b>If you experience frequent unwanted alarms:</b></p>	<ul style="list-style-type: none"> <li>• Check the location of your smoke alarm.</li> <li>• Clean the smoke alarm.</li> </ul>

## WARRANTY AND DISPOSAL

Sprue Safety Products Ltd warrants to the original purchaser that its enclosed smoke alarm be free from defects in materials and workmanship under normal residential use and service for a period of 3 (three) years from the date of purchase (not including the replaceable battery). Provided product is sent back to Sprue Safety Products with proof and date of purchase, Sprue Safety Products Ltd hereby warrants that during the 3 (three) year period commencing from the date of purchase Sprue Safety Products Ltd, at its discretion, agrees to replace the unit free of charge. The warranty on any replacement SB1 alarm, will last for the remainder of the period of the original warranty in respect of the alarm originally purchased - that is from the date of original purchase and not from the date of receipt of the replacement product. Sprue Safety Products Ltd reserves the right to offer an alternative product similar to that being replaced if the original model is no longer available or in stock. This warranty applies to the original retail purchaser from the date of original retail purchase and is not transferable. Proof of purchase is required.

This warranty does not cover damage resulting from accident, misuse, disassembly, abuse or lack of reasonable care of the product, or applications not in accordance with the user manual. It does not cover events and conditions outside of Sprue Safety Products Ltd's control, such as Acts of God (fire, severe weather etc.). It does not apply to retail stores, service centres or any distributors or agents. Sprue Safety Products Ltd will not recognise any changes to this warranty by third parties.

Sprue Safety Products Ltd shall not be liable for any incidental or consequential damages caused by the breach of any expressed or implied warranty. Except to the extent prohibited by applicable law, any implied warranty of merchantability or fitness for a particular purpose is limited in duration for 3 (three) years.

This warranty does not affect your statutory rights. Except for death or personal injury, Sprue Safety Products Ltd shall not be liable for any loss of use, damage, cost or expense relating to this product or for any indirect, or consequential loss, damages or costs incurred by you or any other user of this product.

#### DISPOSAL

Waste electrical products should not be disposed of with your other household waste. The alarm is ideally suited for disposal within the waste electronic and electrical equipment (WEEE) recycling scheme.

Please recycle where facilities exist. Check with your local authority, retailer or contact our Technical Support team for recycling/disposal advice as regional variations apply. The batteries should be removed before disposal of the detector. Both the batteries and the detector should be disposed of in line with current regulations.

Do not attempt to open. Do not burn.