

# INSTALLATION INSTRUCTIONS

## 400 / 401 - 1 POINT TOUCH BAR PANIC EXIT DEVICE

### INTRODUCTION

- The safety features of this product are essential to its compliance with EN 1125: 2008.
- No modifications of any kind, other than described in these instructions are permitted.
- If these instructions are disregarded no responsibility can be accepted by the manufacturer
- These instructions are to be used together with the separate counterpart information leaflet
- These instructions must be supplied to the end user by the installer after installation
- This product is not recommended to be fitted to hollow core doors.
- This product is not intended for use on double action (double swing) doors without modification.
- Check that both frame and door(s) are in good condition and not twisted.
- Check that the door(s) open smoothly and close squarely into the frame.
- Ensure any weather strips or fixings on the door / doorframe do not obstruct correct operation.
- This device must be fitted by a competent person.

### TOUCHBAR SIZING

- This device is suitable for use on: single doors and 1st opening leaf of rebated double door sets.
- Max Door mass 200kg.
- Max Door height 2450mm high (with the Touchbar bar set at 1100mm).
- 400 model is 653,5mm O/A - for doors 692mm to 900mm wide.
- 401 model is 833,5mm O/A - for doors 872mm to 1200mm wide.

### FITTING PROCEDURE

Text instructions letter also refers to the relevant details or dimension shown on the diagram.

- Remove the covers from the **Touchbar Unit** as shown in the '**Covers Diagram**'.
- Choose the correct templates to suit the door arrangement:  
**Template 1:** for Standard (rebated stile) & flush (faced door & frame) type single doors.  
**Template 2:** for rebated double door types (doors that need to be opening in sequence)  
 Note: For Rebated double doors & Flush doors you will need an additional **406B Keep**.
- Determine the height of the **Touchbar Unit** between 900mm and 1100mm from floor level.  
 Single doors: mark this height on the frame adjacent to the door.  
 Double doors: mark this height across doors (at least 200mm from each door edge).
- Align the Touchbar template (selected in step B) with the marked height (step C) and the relevant frame / door edges. Stick it to the door with adhesive tape. Follow the template's instructions to mark positions of the required holes. Pilot drill the Touchbar & keep fixing holes (406B keep holes for rebated double & flush single door applications only)  
 Drill  $\varnothing 16 \times 16$  deep to clear the Touchbar spindle.
- For single door fit the Touchbar to the door.  
 For double rebated doors fit this unit to the 1st opening leaf.  
 Use 3 x **Screw A** to secure the operating end of the Touchbar to the door.  
 Ensure the Touchbar is horizontally aligned. Mark the positions of the two end screws through the holes in the Touchbar. Remove the Touchbar from the door. Pilot drill the two holes to suit **Screw B**. Refit the Touchbar to the door and secure using all 5 screws.
- With the door closed locate the **Centre Keep** equally around the Touchbar's Centre latch, with the white plastic insert facing away from the door and the back face against the door. Mark the position of the holes. Pilot drill and fix with 2 x **Screw A**.  
 For rebated double doors & flush frame single doors fit the additional **406B Keep** with its lip around the edge of the the 2nd opening door leaf / flush door frame.  
 Fit with the screws provided and adjust with packers as required.
- Re-fit the **Touchbar Unit Covers**.
- Test the Touchbar to ensure that when operated the door opens immediately and swings freely, when closed the latches engage fully in the keeps and hold the door securely closed.
- Fit self adhesive "Push Bar To Open" sign onto the door immediately above the Touchbar.

### MAINTENANCE

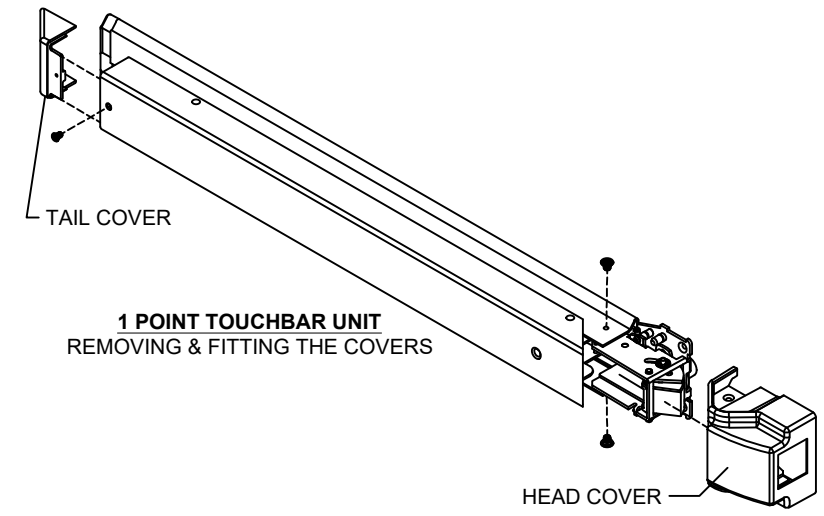
#### Weekly:

Check for correct operation of the Touchbar and that the latch fully engage in its keep. Ensure that keep is free from obstruction.

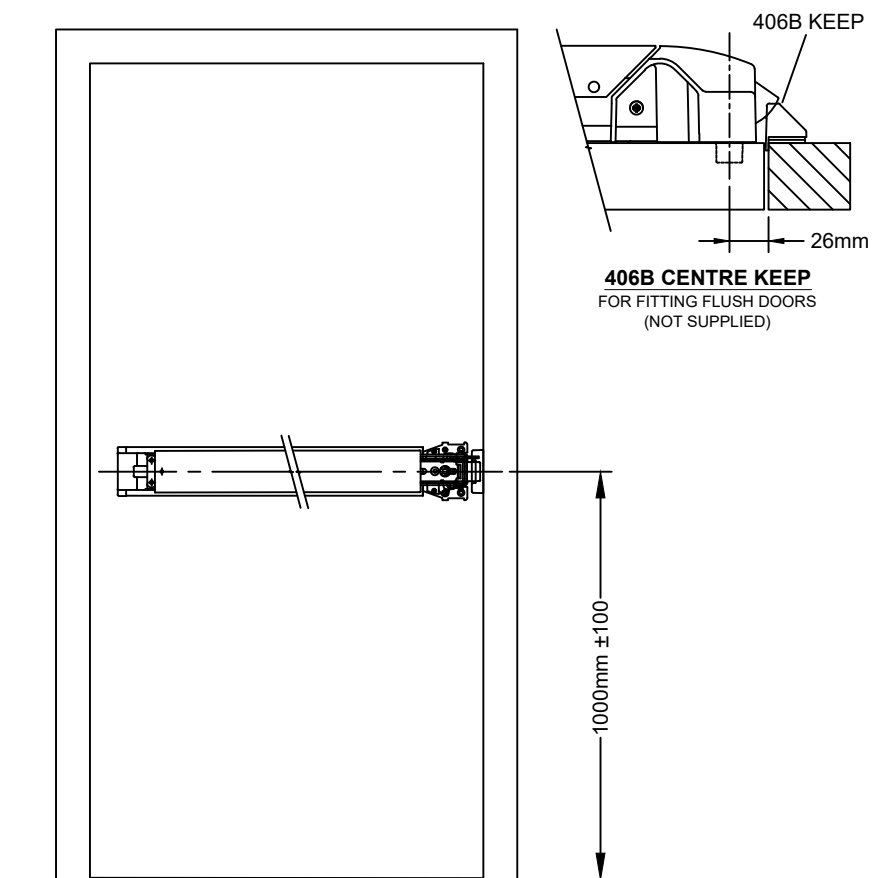
#### 3 Monthly:

Check that all fixings are secure.

### COVERS DIAGRAM

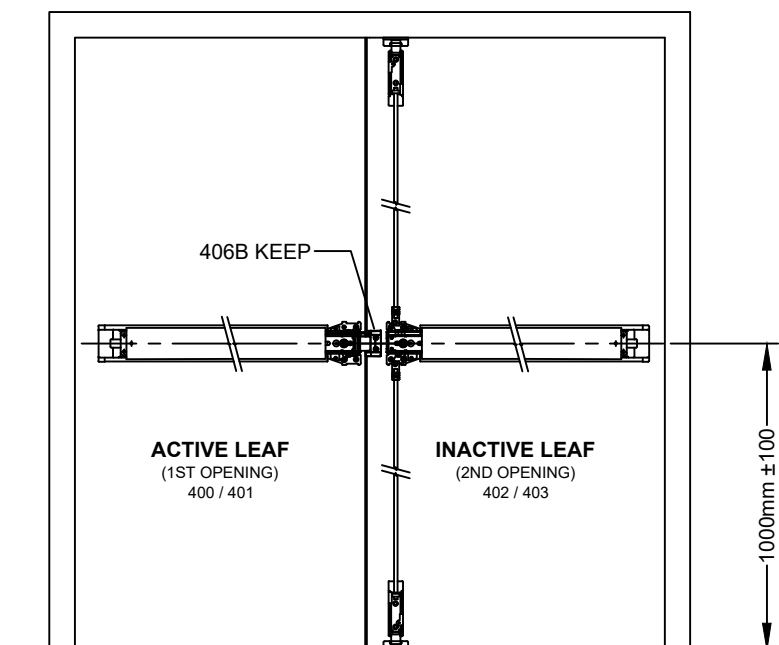


### SINGLE DOOR ARRANGEMENT

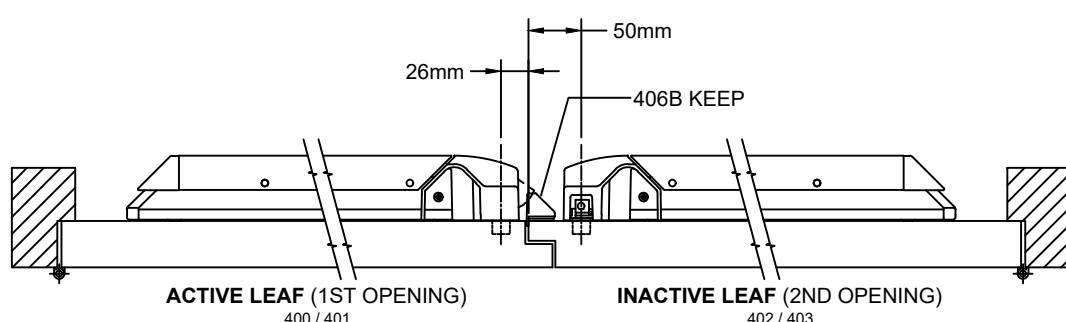


### DOUBLE DOOR ARRANGEMENT

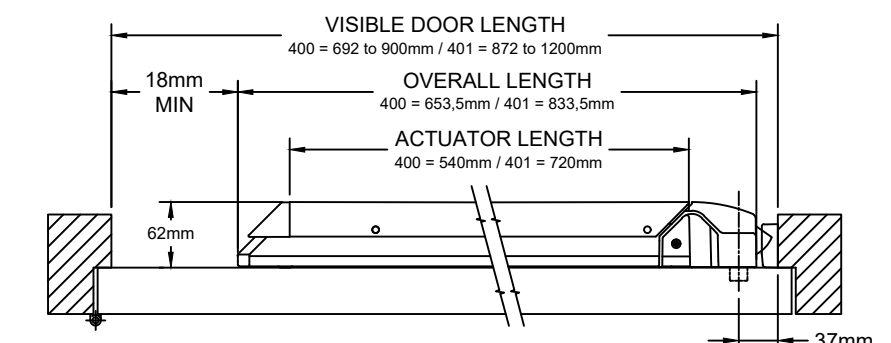
ADDITIONAL ITEMS: 402/403 TOUCHBAR (FOR 2ND OPENING LEAF) & 406B KEEP REQUIRED.

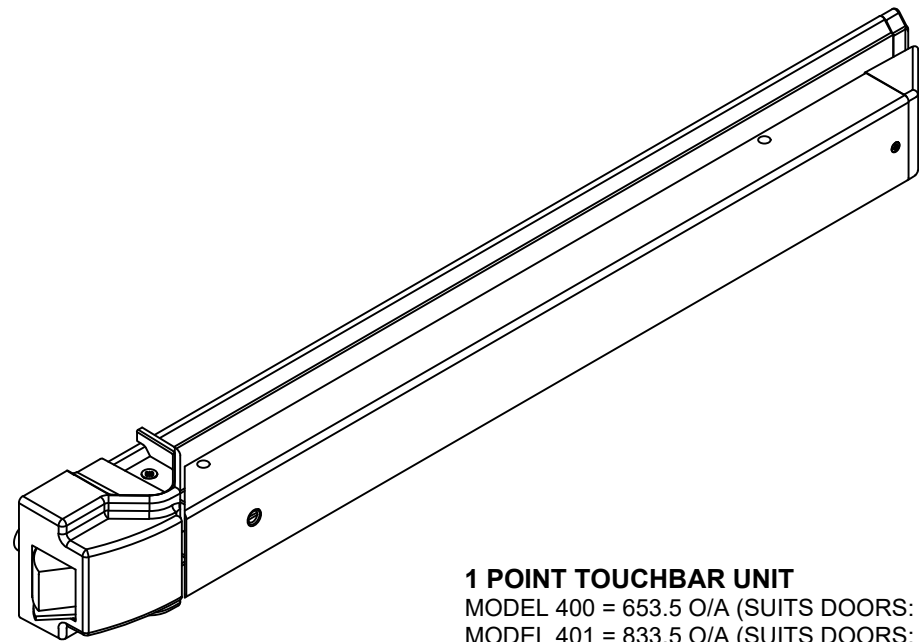


### DOUBLE DOOR DIAGRAM



### SINGLE DOOR / LENGTH DIAGRAM

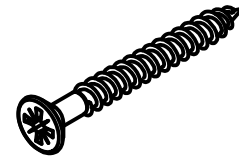




**1 POINT TOUCHBAR UNIT**  
 MODEL 400 = 653.5 O/A (SUITS DOORS: 692 TO 900mm WIDE)  
 MODEL 401 = 833.5 O/A (SUITS DOORS: 872 TO 1200mm DOOR)

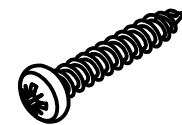
**SCREW PACK CONTENTS**

**SCREW A**



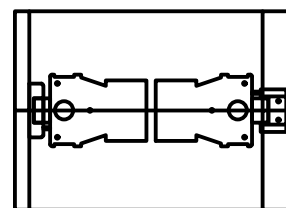
5 x No.8 x 1 1/2" CSK HEAD WOOD SCREWS (POZI HEAD)

**SCREW B**



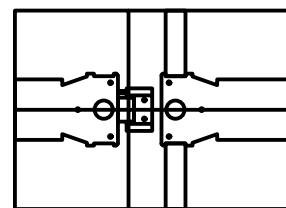
2 x No.8 x 1" ROUND HEAD WOOD SCREWS (POZI HEAD)

**TEMPLATE 1**



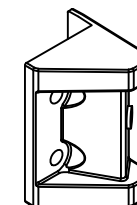
**TB-101 TEMPLATE**  
 (USED FOR: FITTING TOUCHBAR UNIT ON SINGLE DOORS)

**TEMPLATE 2**

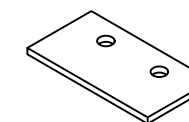


**TB-102 TEMPLATE**  
 (USED FOR: FITTING TOUCHBAR UNITS ON REBATED DOUBLE DOORS)

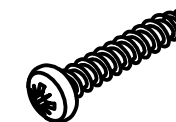
**406B CENTRE LATCH KEEP PACK (NOT SUPPLIED)**  
 OPTIONAL ACCESSORY FOR FLUSH/REBATED DOUBLE DOORS



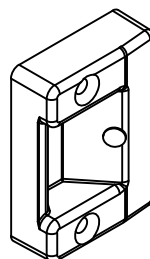
**1 x 406B KEEP**  
 (NOTE: 1 KEEP PER PACK)



**KEEP PACKERS:**  
 2 x 1mm THICK  
 2 x 1.5mm THICK  
 2 x 2mm THICK



**2 x No.8 x 1" ROUND HEAD WOOD SCREWS (POZI HEAD)**



**1 x CENTRE KEEP (4401)**

**OTHER CONTENTS**

- COUNTERPART INFORMATION SHEET
- 'PUSH BAR TO OPEN' SIGN

NOTE: NOT ALL THE FIXINGS SUPPLIED ARE NECESSARILY USED.

EXIDOR LIMITED.  
 PROGRESS DRIVE  
 CANNOCK  
 STAFFORDSHIRE  
 WS11 0JE  
 ENGLAND, UK  
 TEL: +44 (0)1543 460030  
 www.exidor.co.uk