

4700 Series

Pull handle furniture

A range of round bar pull handles designed to complement the lever furniture.

Available in 2 diameters and a variety of lengths. See overleaf for fixing packs and fixing variations including optional face fixing roses.



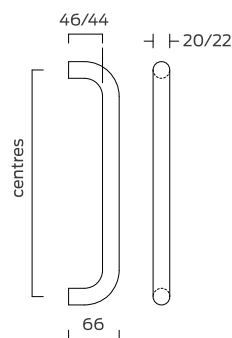
Description:	D pull handle - Round bar section							
Ref:	4721.20.200	4721.22.200	4721.20.300	4721.22.300	4721.20.400	4721.22.400	4721.20.600	4721.22.600
Diameter: mm	20	22	20	22	20	22	20	22
Centres:	200		300		400		600	

Certification

- Fire tested to EN 1634 for use on fire doors up to 90 minutes timber / 4hr steel
- DoP available at www.britoninspec.co.uk

Features & Functions

- Pull handles over 300mm are compliant with BS 8300 recommendations
- Available in 20mm and 22mm diameter
- Each pull handle can be used individually for single sided applications or as a pair mounted back to back
- Standard fixing pack capable of various mounting options (see overleaf)
- Optional face fixing roses



Briton

4700 Series

Pull handle furniture

Pull handle fixings

All Briton 4700 Series pull handles can be ordered individually and must be ordered together with a standard fixing pack which contains all the components required to mount the pull handle in any of the 4 applications shown opposite.

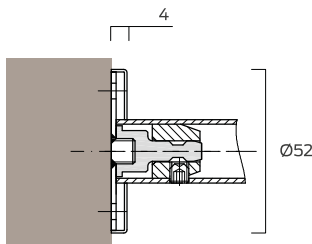
For back to back assembly simply order 2 individual pull handles and one standard fixing pack.

Ref:	Description
4726	Standard fixing pack for timber, metal or glass doors

Optional rose mount fixings

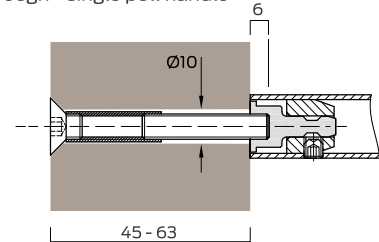
One fixing pack is required for each pull handle and they must be ordered according to the pull handle diameter (20 or 22mm).

Roses are supplied with stainless steel face fixing screws. Snap fit push on covers conceal all fixings.

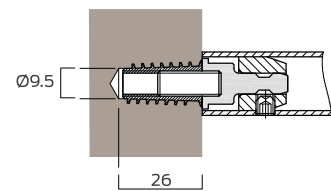


Ref:	Description
4725.20	Face fixed rose mounting kit for 20mm diameter pull handles.
4725.22	Face fixed rose mounting kit for 22mm diameter pull handles.

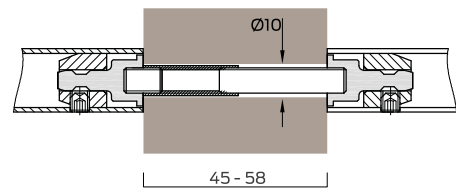
Bolt through - single pull handle



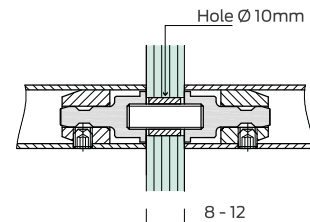
Secret fix - single pull handle



Back to back pair on timber door



Back to back pair on glass door



Allegion (UK) Limited

Bescot Crescent, Walsall, West Midlands WS1 4DL

Tel: +44 (0) 1922 651370

Email: inspec@allegion.com