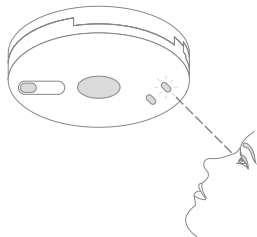


Checking the New Alarm

9. Checking the indicating lights

Once the new alarm has been connected and the mains power has been restored it is important to check the indicating lights.

If the alarm is working correctly the **GREEN LIGHT** should be on constantly and the **RED LIGHT** should flash once every 40 sec.



10. Testing the alarms



Press and hold the test button for 10 seconds, the alarm should sound loudly.

If there are other connected alarms in the house these should also sound within 10 seconds of the test button being pressed.

Any Problems?

If you have any problems fitting your new alarm, please give us a call on:

0800 612 6537 or email support@easichange.co.uk

Doc 1129 - V1.0



User Manual for the easichange Replacement Series:

Ei141EK - Ionisation

Ei161EK - Ionisation

Ei144EK - Heat

Ei164EK - Heat

Ei146EK - Optical

Ei166EK - Optical

Congratulations! You have purchased a genuine Easichange replacement smoke/heat alarm kit containing an OEM Ei Electronic alarm head.

This replacement kit contains everything you need to easily, quickly and safely replace your mains powered, Ei Electronics / Aico smoke or heat alarm.

Removing the Existing Alarm

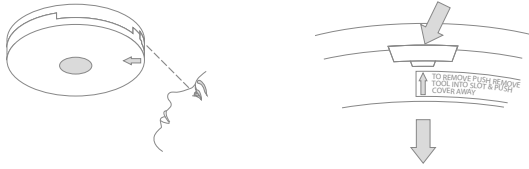
1. Disconnect the mains power

Warning! Before the existing alarm is removed, the mains power must be disconnected.

Look on your mains distribution board for a switch marked "Smoke Alarms" or similar and switch this off. If there isn't a switch marked with a recognisable label, switch the mains power off.

Note: This will cut power to everything in the house including the lights.

2. Locate the removal Slot



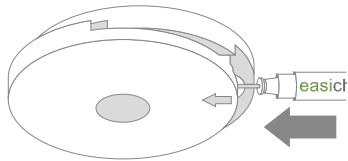
Locate the directional arrow on the front face of the alarm, the removal slot is located directly above the arrow.

3. Inserting the removal tool



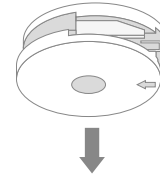
Insert the supplied removal tool approx. 1cm into the alarms removal slot and lever it down gently.

4. Slide the alarm off the mounting plate



With the removal tool still inserted, slide the lower half of the alarm away from the removal tool in the direction of the arrow on the cover.

5. Remove the alarm



Remove the alarm from the base by moving it vertically towards the floor.

Connecting the New Alarm

6. Insert the Battery (Ei 141, Ei 144, Ei 146)

If your alarm is apart of the Ei 140 series of alarms then insert the 9v battery that is included into the alarm.

7. Attach the Alarm



Place the alarm on the base, slightly offset from the centre and slide in the opposite direction to the arrow on the cover until it "clicks" into place.

8. Reconnect the mains power

After the new alarm has been attached to the base plate, reconnect the mains power supply.