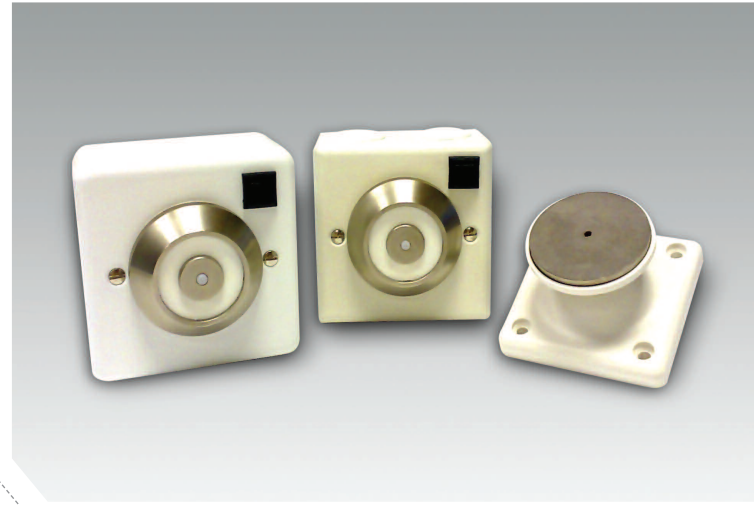


- INTEGRAL PART OF ANY FIRE ALARM SYSTEM
- 24VDC OR 230VAC SUPPLY VOLTAGE
- ZERO RESIDUAL FORCE
- 200N HOLDING FORCE
- ROBUST ENCLOSURE
- APPROVED TO EN1155 AND CE MARKED
- IP 51 PROTECTION
- HIGH QUALITY COST EFFECTIVE PACKAGE
- INCLUDES KEEPER PLATE & INSTRUCTIONS

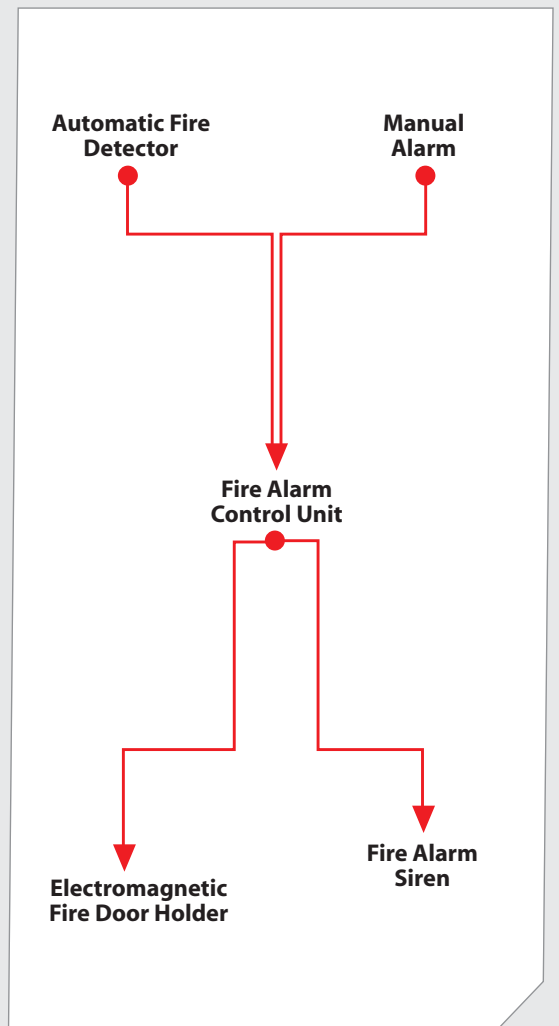


Electromagnetic Fire Door Holders are designed to hold open Fire Doors in any areas where easy access is essential, and can be used in conjunction with any suitable fire alarm systems. When an alarm is triggered, power to the door holder is cut, allowing the fire door fitted with it's standard closing mechanism, to shut automatically. Conquest door holders are fitted with an integral release button and supplied complete with an adjustable keeper plate and instructions as standard.

The Conquest magnet is built around a robust facia plate for flush mounting on a standard electrical back box. A spring-loaded pin ensures zero residual holding force. For surface mounting, it is supplied with a matching die cast aluminium box complete with 20 mm entry holes and blanking plugs or alternatively a pressed steel surface mount box with 20 mm knockouts. This product has been successfully type tested to EN1155 and is CE marked under the Construction Products Directive.

The 230Vac unit includes a filter for EMC emissions. Internal diodes dissipate any "back EMF" on switch-off, reducing wear at the control unit.

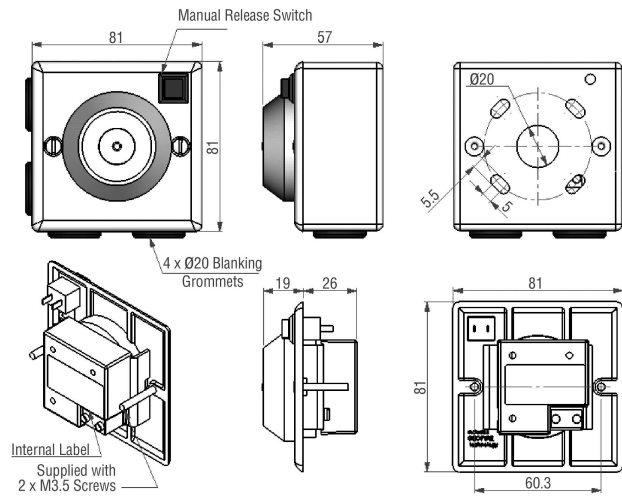
The Conquest is ideal for use in any public access areas including Hospitals, Offices, Hotels and Nursing Homes.



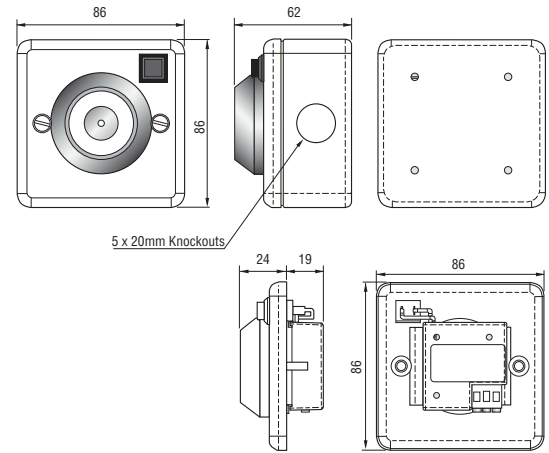
Geofire reserve the right to change the specifications in this data sheet without prior notification

TYPE 59 CONQUEST DOOR HOLDER

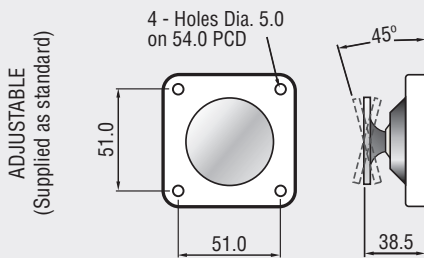
**Standard Aluminium Version**



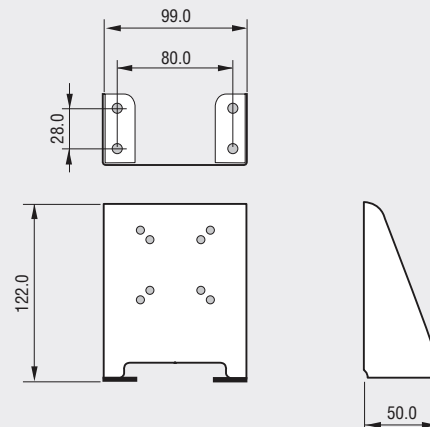
**Knockout Steel Version**



**KEEPER PLATE**



**FLOOR MOUNTING BRACKET**



**TECHNICAL INFORMATION**

<b>Voltage</b>	24Vd.c. or 230Vac
<b>Holding Force</b>	200N (+20%)
<b>Power Rating</b>	1.15W
<b>Residual Holding force</b>	Zero
<b>Ambient Temperature</b>	0 - 40°C
<b>Ingress Protection</b>	IP 51
<b>Casing</b>	Aluminium or Steel
<b>Weight</b>	420g or 530g
<b>Door Power Rating</b>	3 to 6

**ACCESSORIES**

Conquest door holders are supplied, as standard, with a flexible Keeper Plate and Installation Instructions. All other accessories are supplied separately.

**ORDER CODES:**

**SURFACE MOUNTED**

- 24 Vdc** inc. standard back box & fascia plate : 3-59-0350
- 230 Vac** inc. standard back box & fascia plate : 3-59-0351
- 24 Vdc** inc. pressed steel back box & fascia plate: 3-59-0362
- 230 Vac** inc. pressed steel back box & fascia plate : 3-59-0363

**FLUSH MOUNTED**

- 24 Vdc** inc. standard fascia plate : 3-59-0352
- 230 Vac** inc. standard fascia plate : 3-59-0353
- 24 Vdc** inc. pressed steel fascia plate: 3-59-0364
- 230 Vac** inc. pressed steel fascia plate : 3-59-0355

